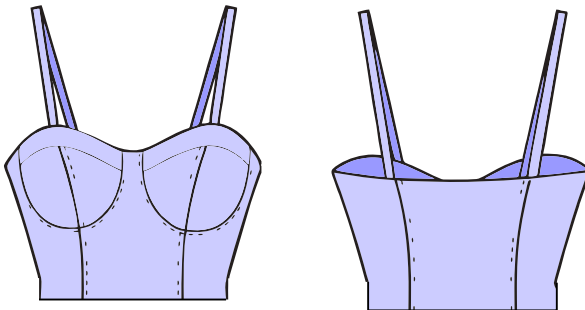


Loose your mind. Find your soul.

SOULMATTER

Bralette pattern for spandex fabrics

0122



- Bustier dress printable in A4
- Bustier dress printable in US letter
- Bustier dress printable in A0
- Book of instructions

1cm/0.4-inch Seam allowances already included in the pattern of bustier.









Sewing pattern - Bralette

Pick Your size

The pattern includes 7 sizes XXS to XXL: 34 to 46 Europe size, 4 to 16 US size and 6 to 18 UK size

Choose your size using the size chart below:

| US Size Europe size UK size | US 4 | US 6 | US 8 | US 10 | US 12 | US 14 | US 16 |
|-----------------------------------|-----------|-----------|-----------|-----------|-----------|-----------|-----------|
| | Europe 34 | Europe 36 | Europe 38 | Europe 40 | Europe 42 | Europe 44 | Europe 46 |
| | UK 6 | UK 8 | UK 10 | UK 12 | UK 14 | UK 16 | UK 18 |
| Bust | 80 cm | 84 cm | 88cm | 92 cm | 96 cm | 100 cm | 104 cm |
| | 31.5 inch | 33 inch | 34.6 inch | 36.2 inch | 37.8 inch | 39.3 inch | 40.9 inch |
| Waist | 64 cm | 66 cm | 70 cm | 74 cm | 78 cm | 82 cm | 86 cm |
| | 25.2 inch | 26 inch | 27.5 inch | 29.1 inch | 30.7 inch | 32.3 inch | 33.8 inch |
| Hip | 88 cm | 90 cm | 94 cm | 98 cm | 102 cm | 106 cm | 110 cm |
| | 34.6 inch | 35.4 inch | 37 inch | 38.5 inch | 40.1 inch | 41.7 inch | 43.3 inch |

| Legend | |
|-------------------------------------------------------------------------------------|------------------|
|  | Thread direction |
|  | Size 46 |
|  | Size 44 |
|  | Size 42 |
|  | Size 40 |
|  | Size 38 |
|  | Size 36 |
|  | Size 34 |

Printing

- Pattern is in real size just make sure to set printer at 100% scale or real size when printing.
- You have 3 printing options available:
- A4 size, Letter Size & A0 size. You can print our patterns at home if you have a printer or send them to the online/ local printing shop.
- Ensure you print at actual size (100%scale).
- Verify that the print out size is correct by measuring the 2-centimeter scale on the pattern “using a ruler”
- Cut and glue pattern details with a sticky tape.

Materials for bralette:

Which fabric you should use for this pattern?

If you are looking for that sexy bustier look I recommend you use a stretchy fabric with a 25% to 50% percentage of elastane in composition to have that perfect fitted bralette. Fabric choice for this pattern will depend on your preference, you could choose soft, thick or medium-thick fabric depending on the look you are going for

What will you need to make this bustier?

- Fabric: You will need around 20cm or 8 inch of fabric (width of fabric around 1yard)

Additional material (Optional)

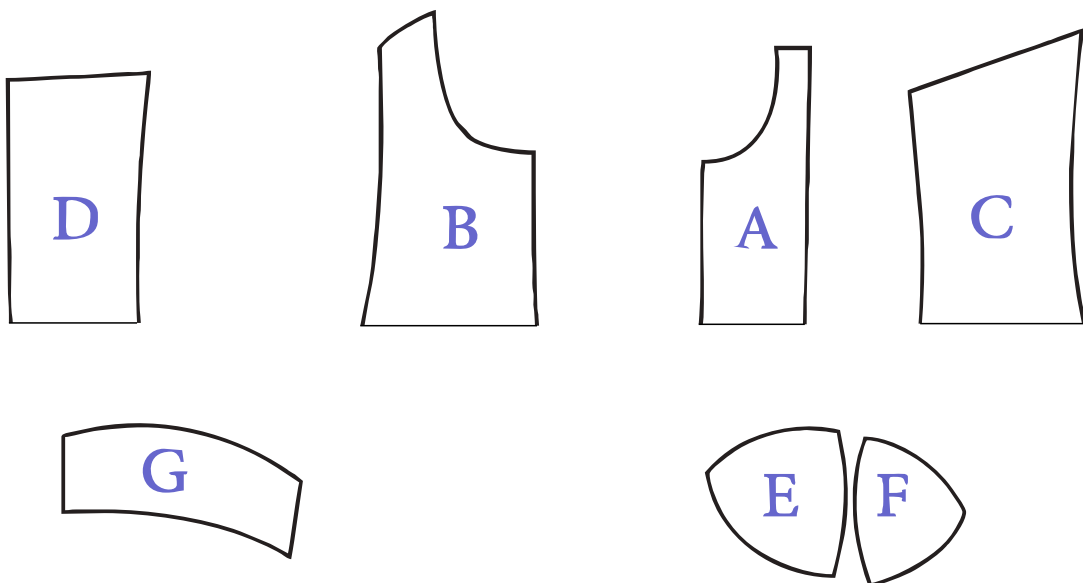
This is optional as this is a bralette with non-padded cups and without boning. The pattern instructions doesn't provide it, but you can use this pattern to sew the bustier with boning, underwire, and foam padded cups only if you know how and have such experience. But this model's idea is supposed to be easy bustier top for beginners, so I didn't how and have such experience. But this model's idea is supposed to be easy bustier top for beginners, so I didn't want to complicate it. You will need:

2 bra underwire
2 boning 20 cm/ 8 inch for front
2 boning 20 cm/ 8 inch middle back
2 boning 20 cm/ 8 inch side back

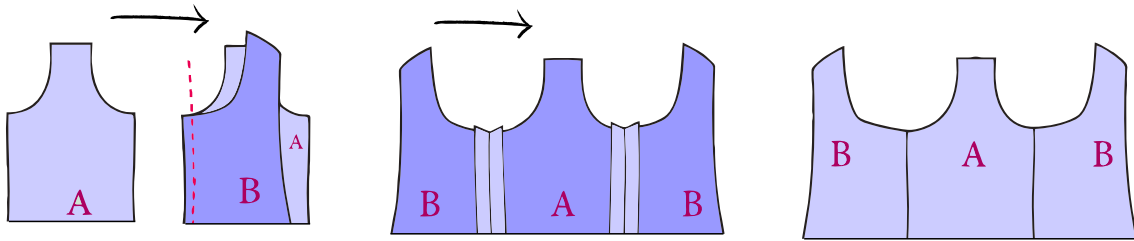
Pattern Pieces

- A – Front Center of bralette, cut on folded fabric
- B- Front side of dress, cut 2
- C- Back side of dress, cut 2
- D- Back Center of dress, cut on folded fabric
- E- Lower cup side piece, cut 2
- F- Lower Cup Center piece, cut 2
- G- Upper bust cup, cut 2

Dress pattern does not include straps but you can cut 2 rectangular pieces 52*4 cm (20.4*1.5 inch)

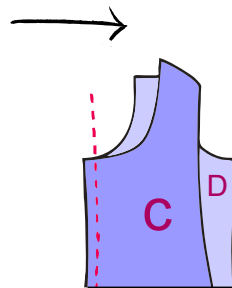


1. Sew front panels together



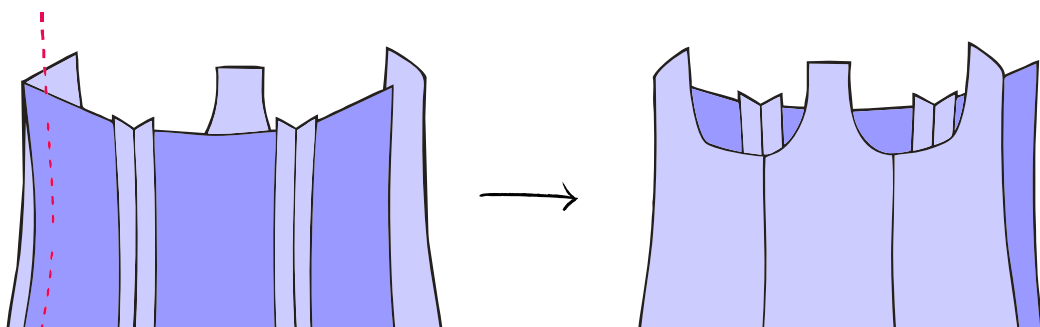
Sew front panels together, front center pattern of bralette (A) with front side (B). Sew them together and iron flat the seam

2. Sew back panels together

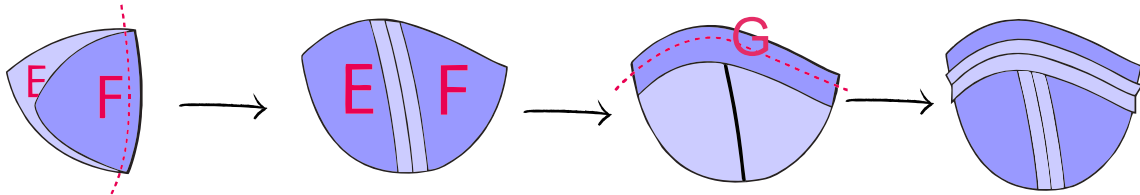


Sew the back pieces of the top together, the back center pattern of the bralette (D) with the back side (C) pieces. Sew them together and iron flat the seam and topstitch.

3. Sew front panels to back panels together

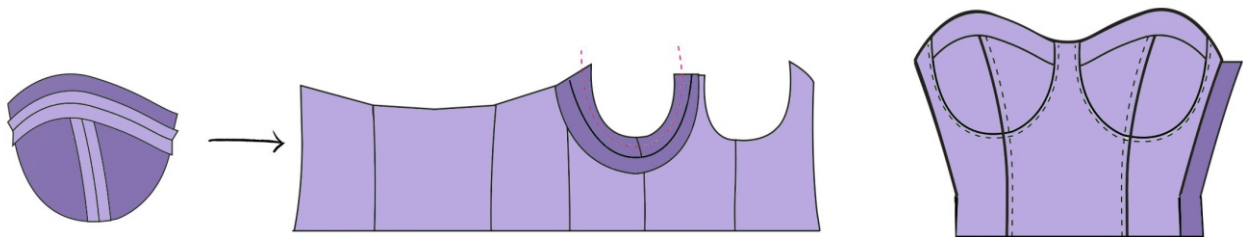


4. Sew Cups



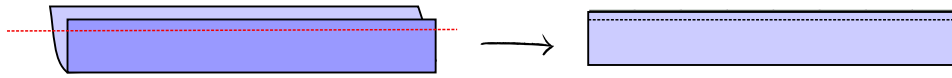
Sew lower cup center piece (F) with lower cup side piece (E) and iron flat the seam. Pin the upper bust cup (G) to lower cup pieces(E &F) then sew and iron flat the seam.

5. Sew cups to dress

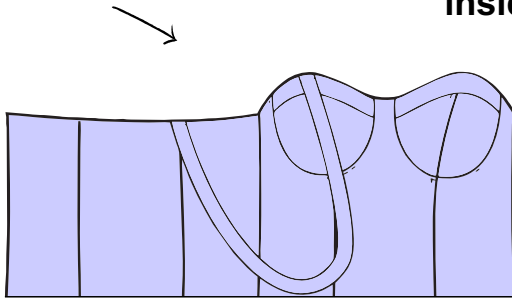


Place your cups to dress right side fabric together and start sewing the two together while moving slowly into the curve line, cut excess seam around the curve lines and iron flat the seam

6. Sew facing and straps to bodice



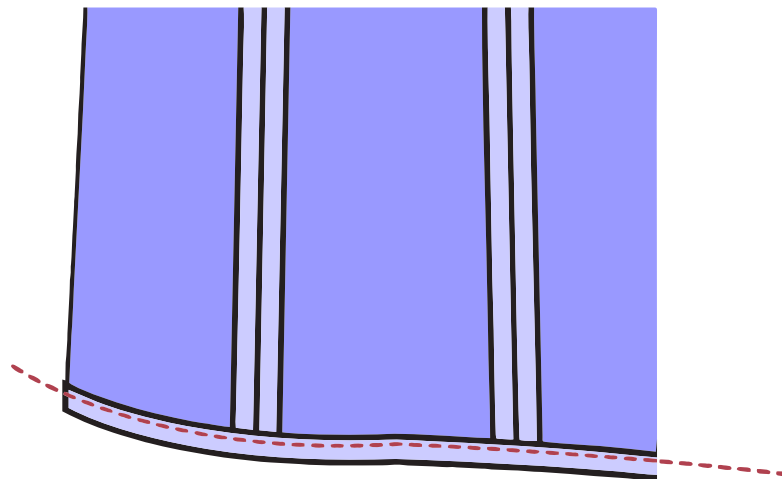
Fold the straps right side fabric matching each other and sew all along the long side and turn the straps inside out



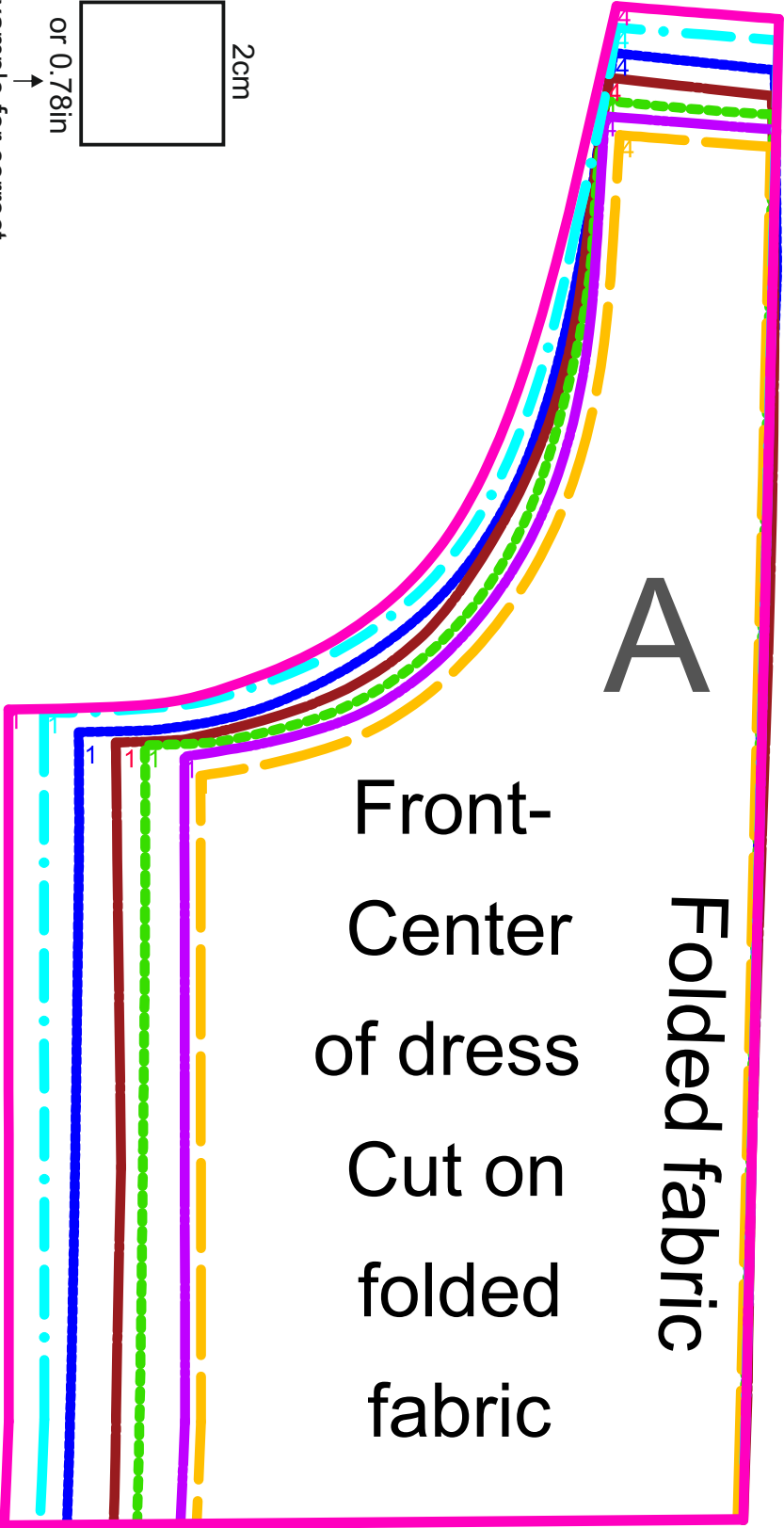
Pin your strap piece to the cups with the right side fabric facing each other.

Note: make sure you try the dress when you pin straps to make sure you are happy with length of the straps and adjust if needed.

7. Finish the bottom



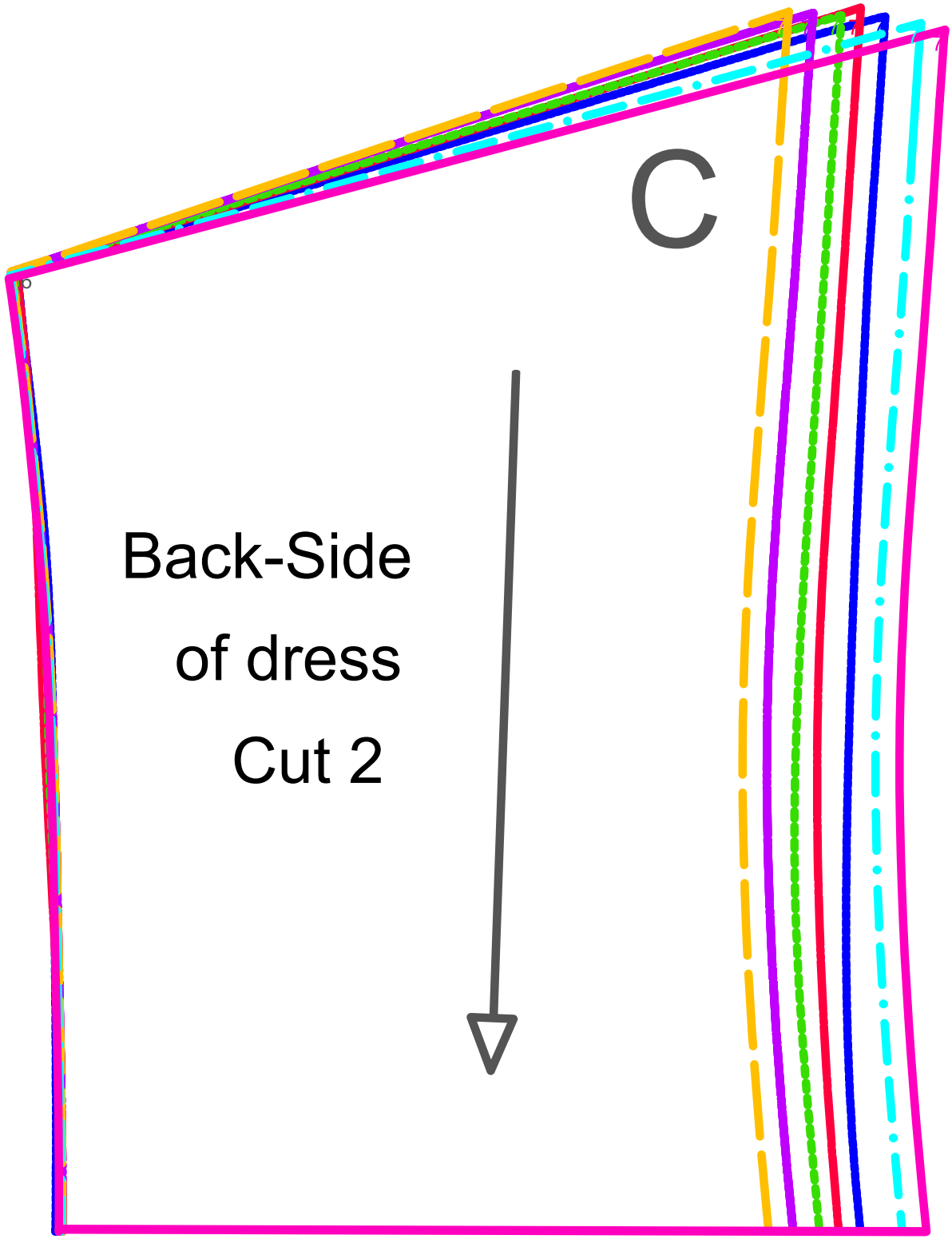
Double fold on the bottom of your bralette at 1cm and stitch along all the bottom.

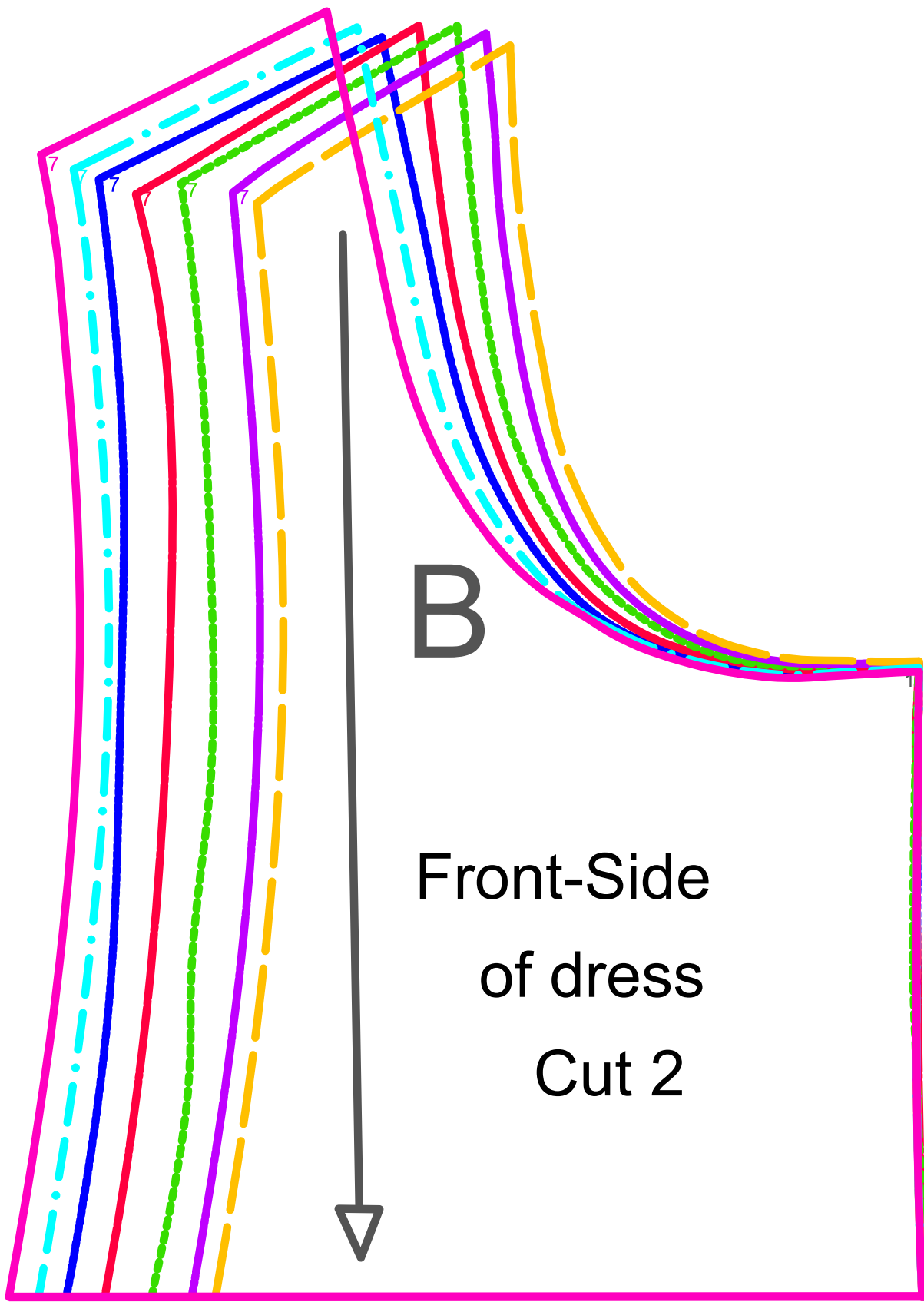


Example for correct printer settings: measure the cube before cutting the pattern.

Back-Side
of dress
Cut 2

C





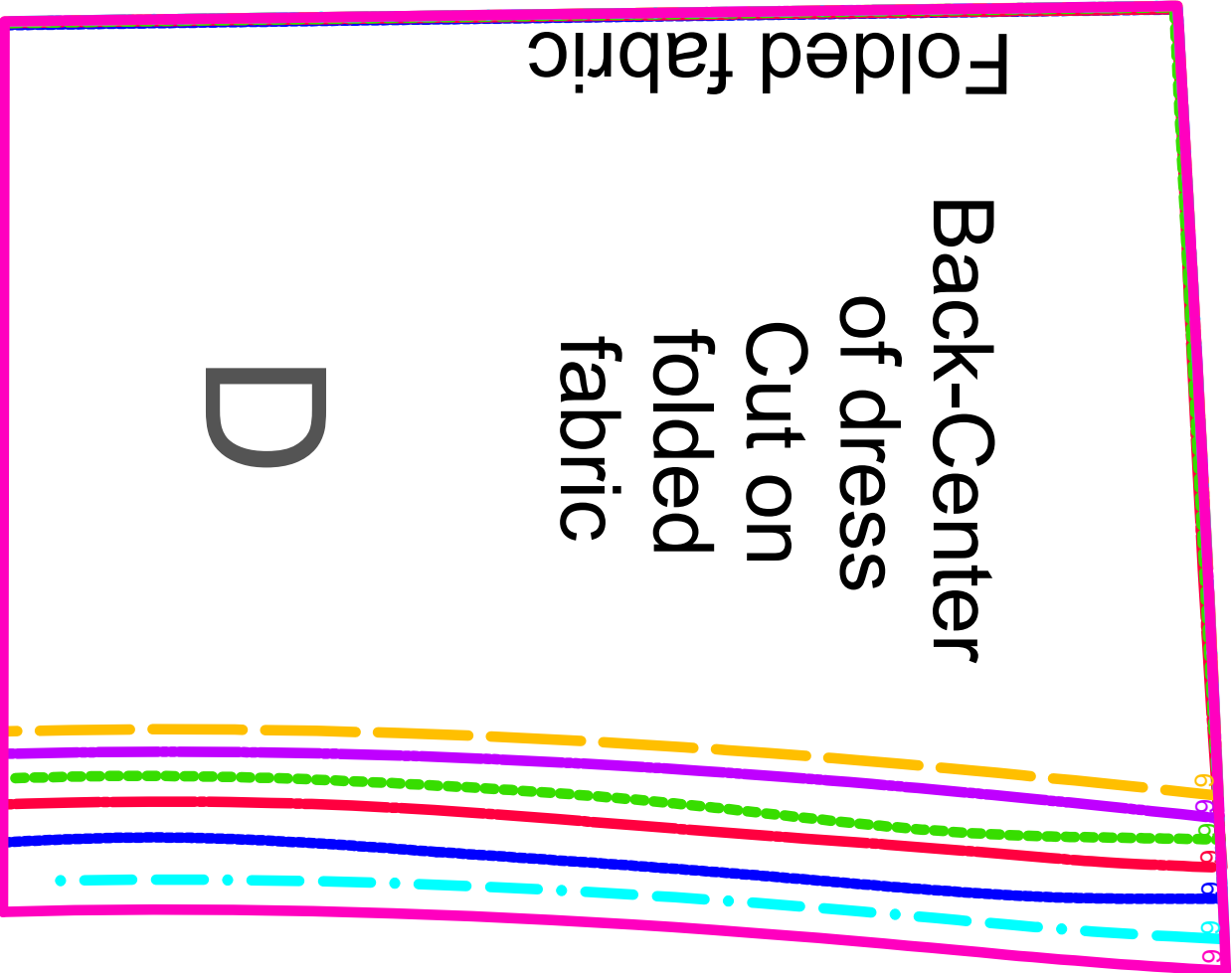
B

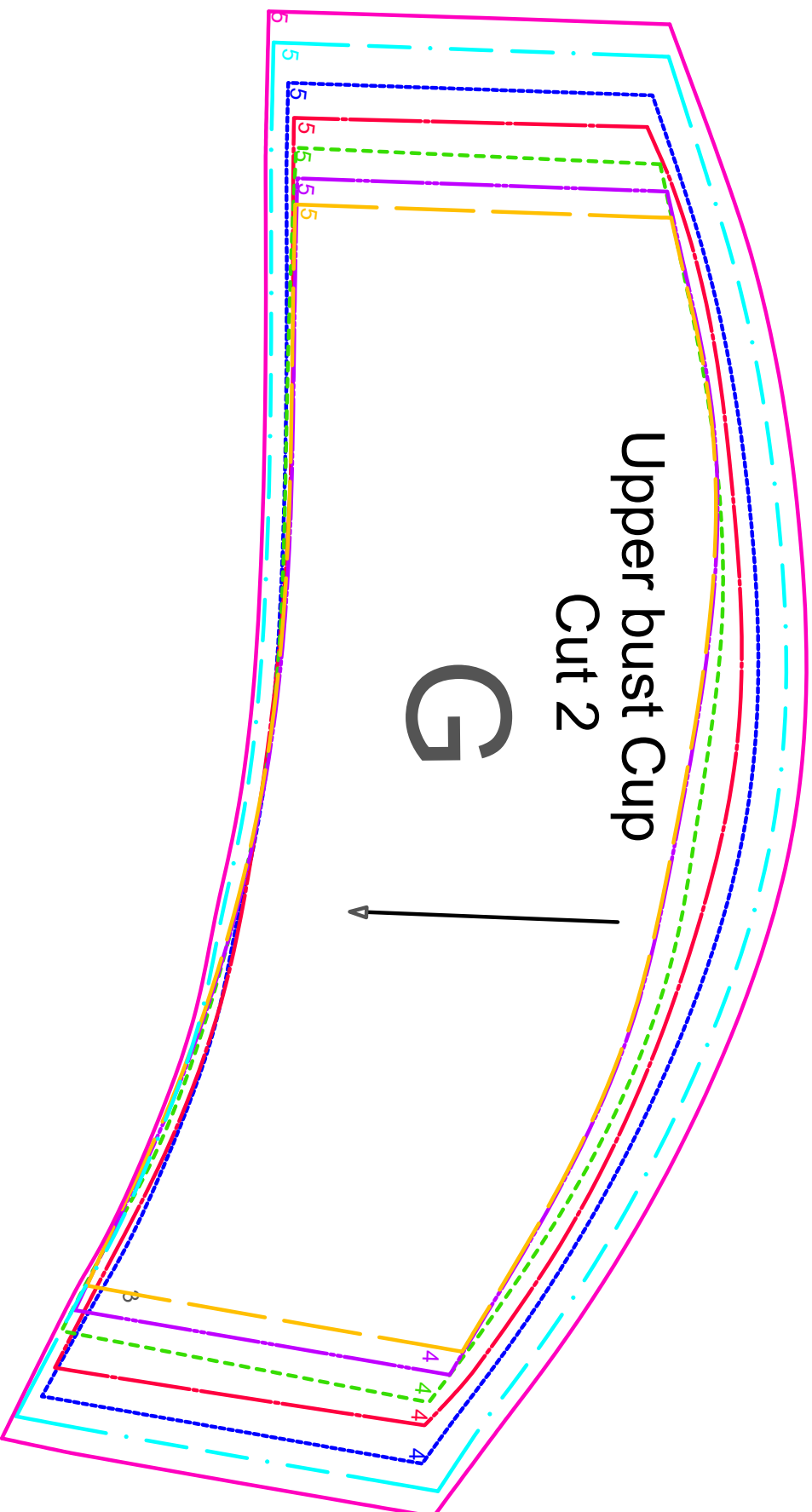
Front-Side
of dress
Cut 2

Folded fabric

Back-Center
of dress
Cut on
folded
fabric

D





Upper bust Cup
Cut 2

G



