

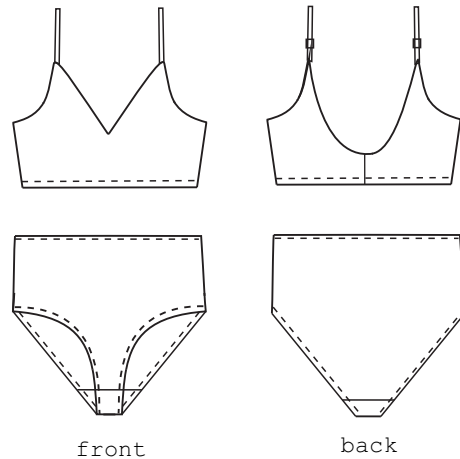
*Loose your mind. Find your soul.*

# SOULMATTTE

42	—————
40	.....
38	———
36	.....
34	.....

Basic two piece swimsuit

0141



**Add seam allowance**

Suitable only for 2-ways stretchy fabrics. You will need **45cm (18inch)** of fabric.

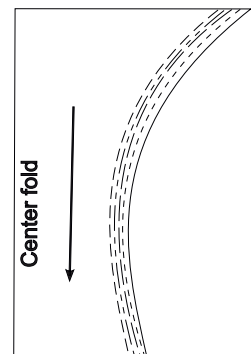
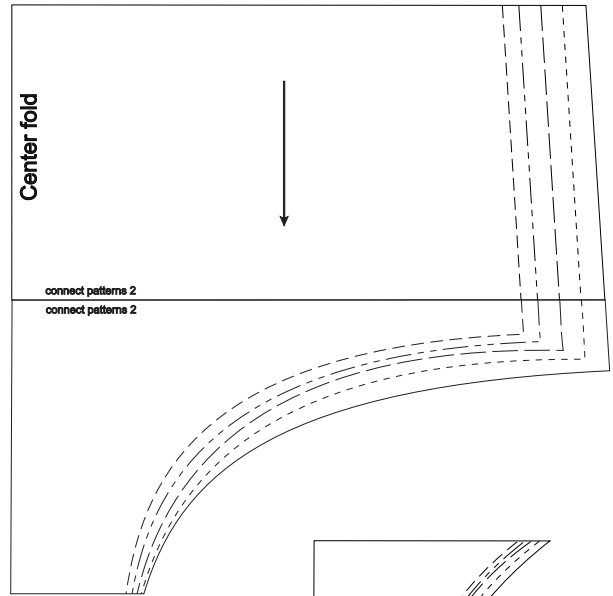
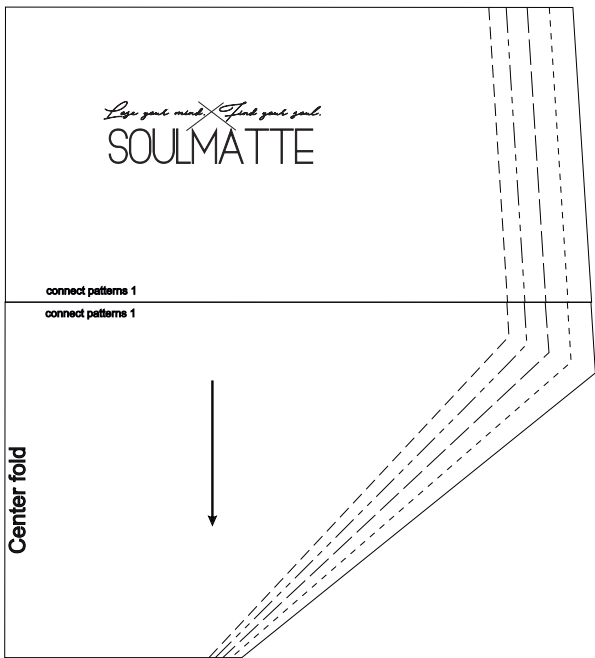
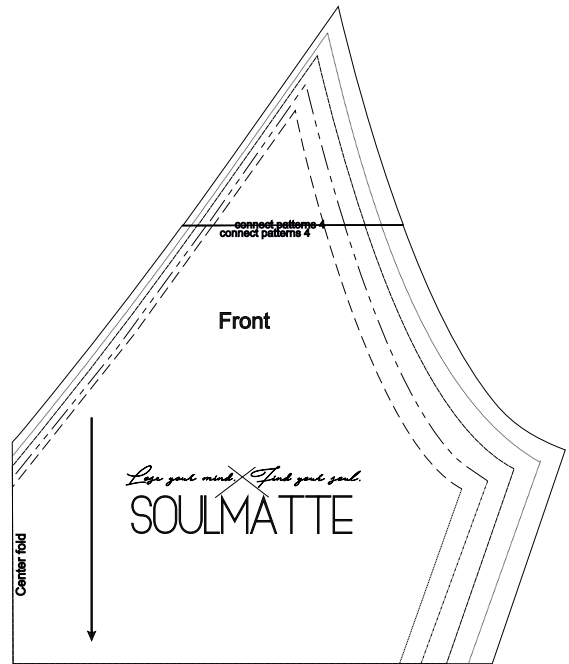
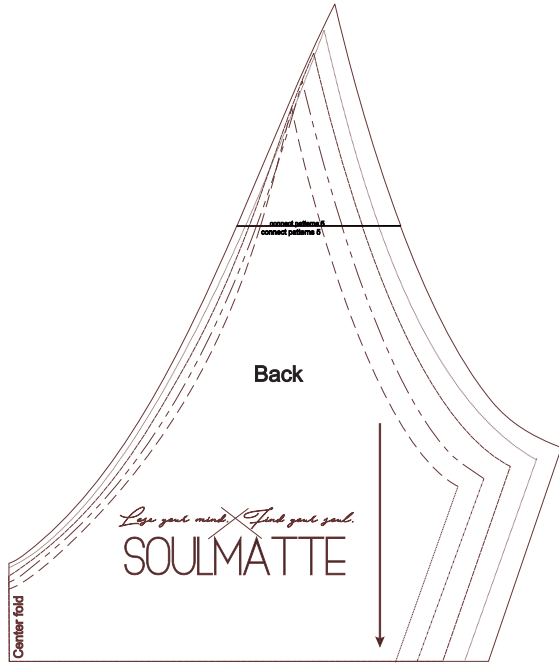
Cut and glue this pattern together with sticky tape. Made for regular A4 home printer. Choose "scale to fit" printer settings.

For more sewing tips please visit "Soulmatte" Youtube channel

INCH	XS	S	M	M/L	L
	34	36	38	40	42
BUST	31.4	33	34.6	36.2	37.7
WAIST	24.4	25.9	27.5	29.1	30.7
HIPS	33.8	35.4	37	38.5	40.1

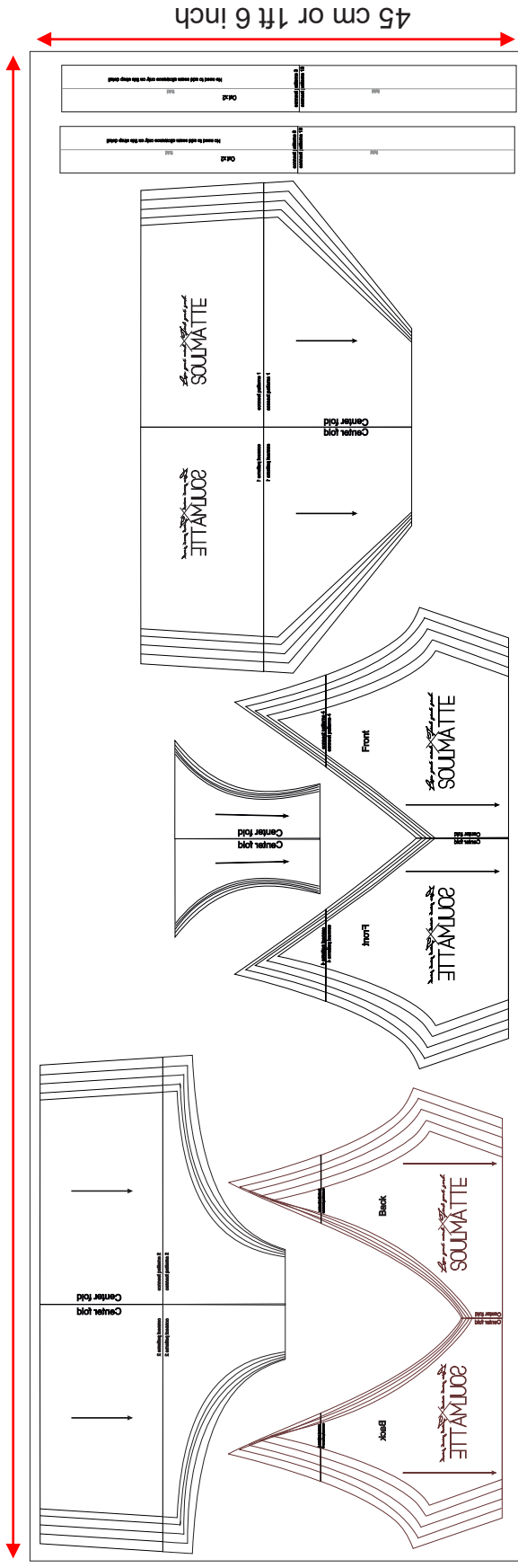
CM	XS	S	M	M/L	L
	34	36	38	40	42
BUST	80	84	88	92	96
WAIST	62	66	70	74	78
HIPS	86	90	94	98	102

*Sewing pattern - Laguna swimsuit*

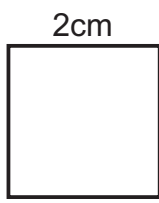
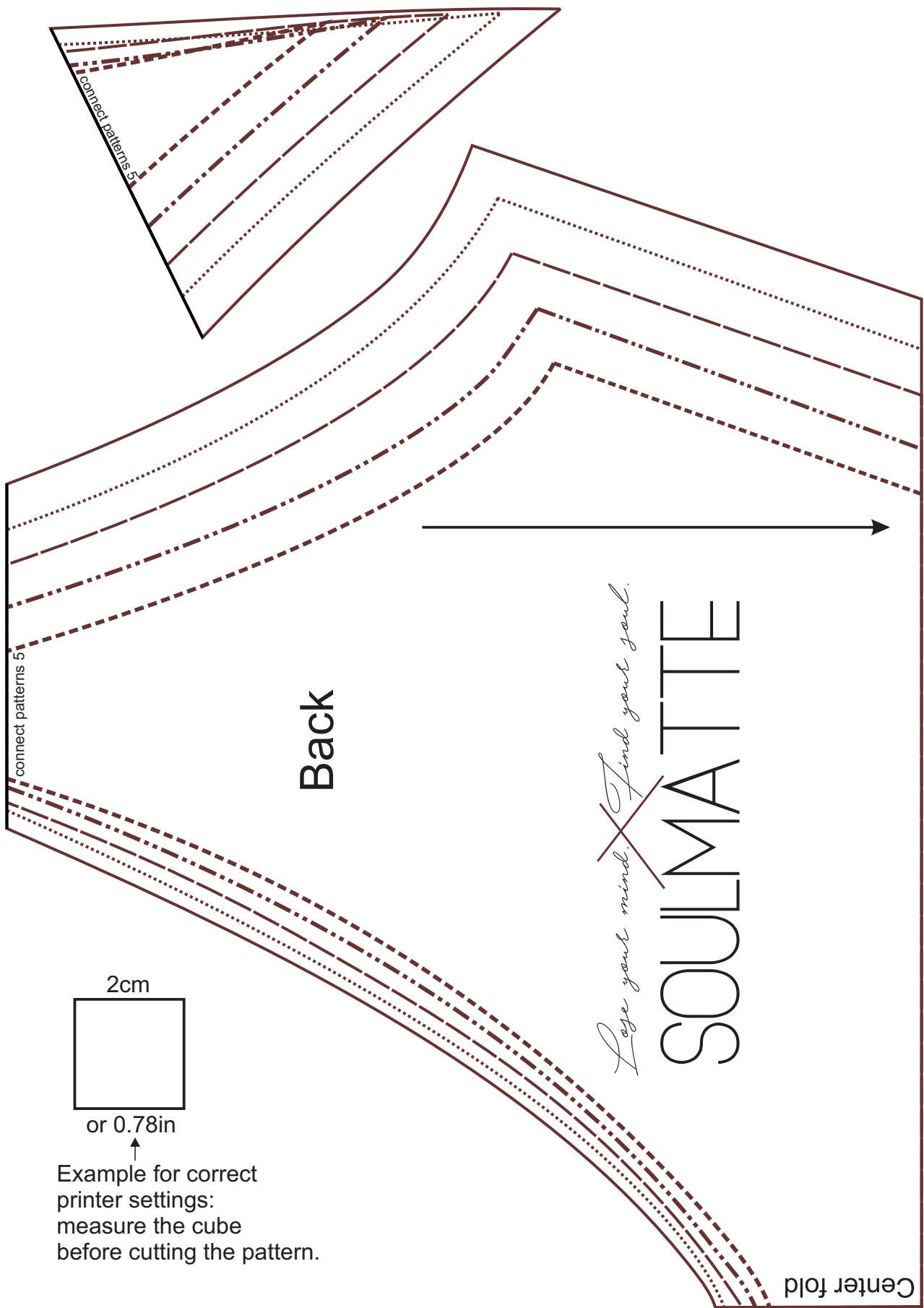


# Cutting fabric

140cm or 4ft 7 inch



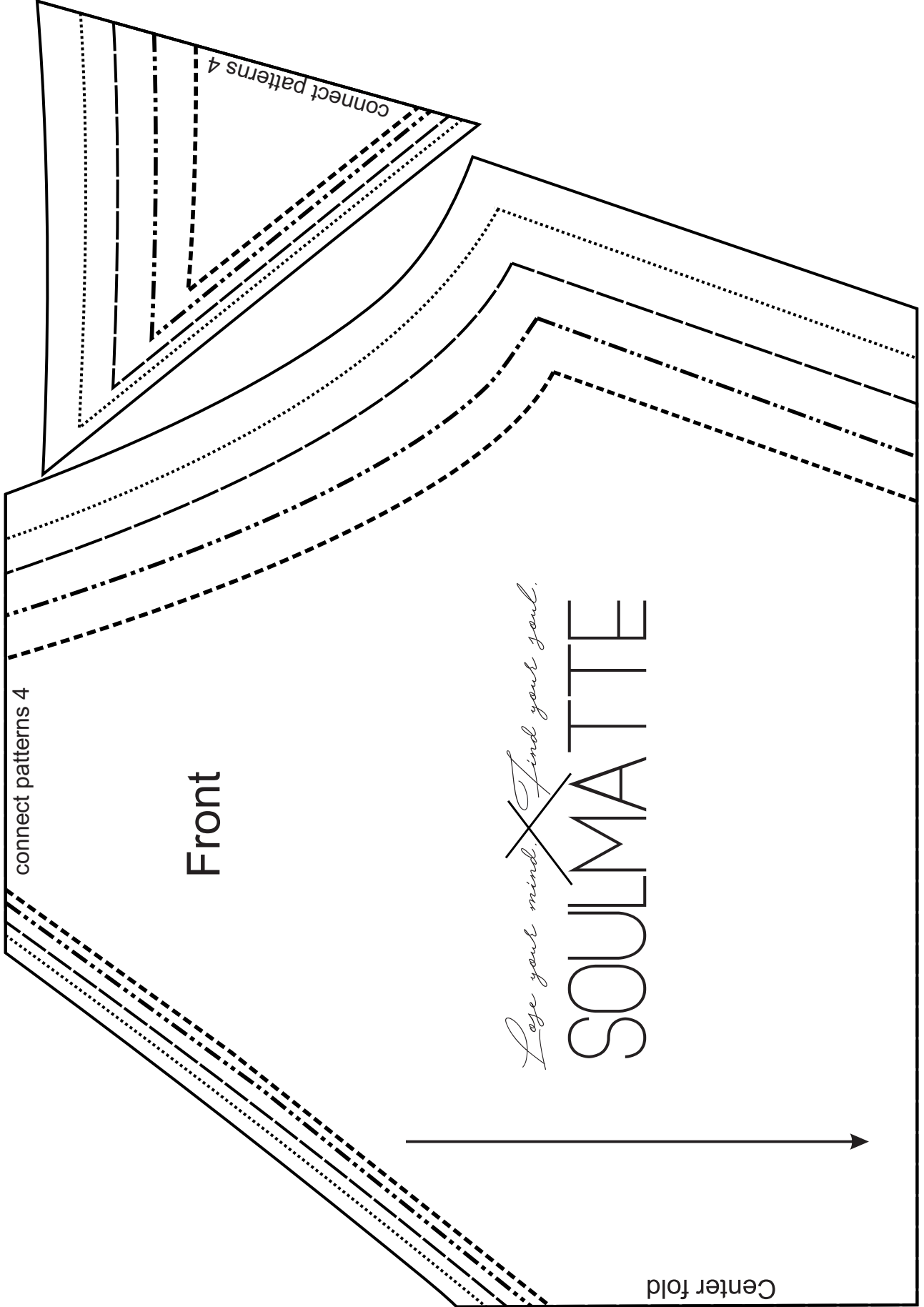
45 cm or 1ft 6 inch



Example for correct printer settings:  
measure the cube  
before cutting the pattern.

*Lage your mind. Find your soul.*  
**SOULMATTTE**

Center fold



connect patterns 4

Front

*Love your mind. Find your soul.*

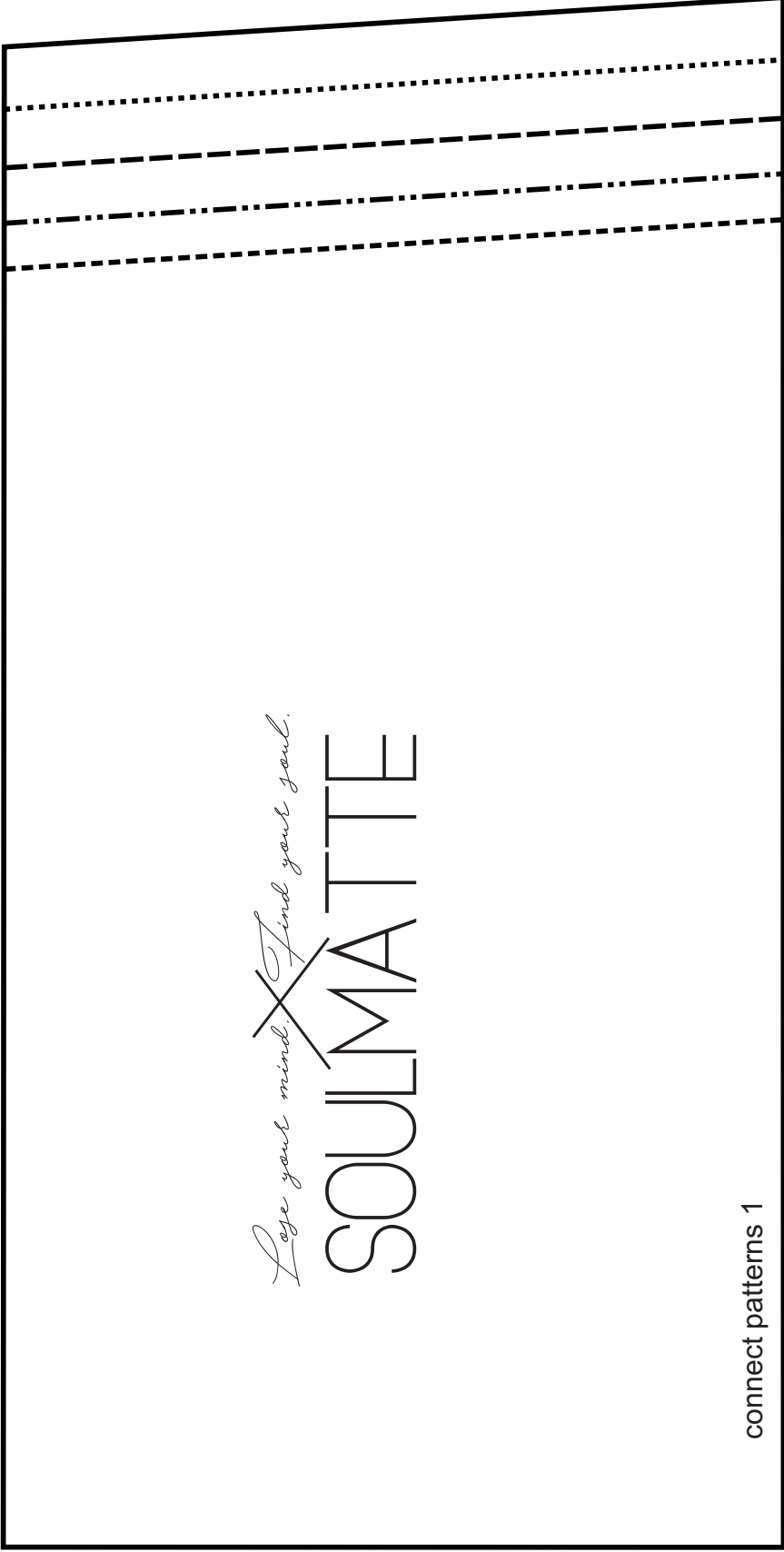
SOULMATTIE

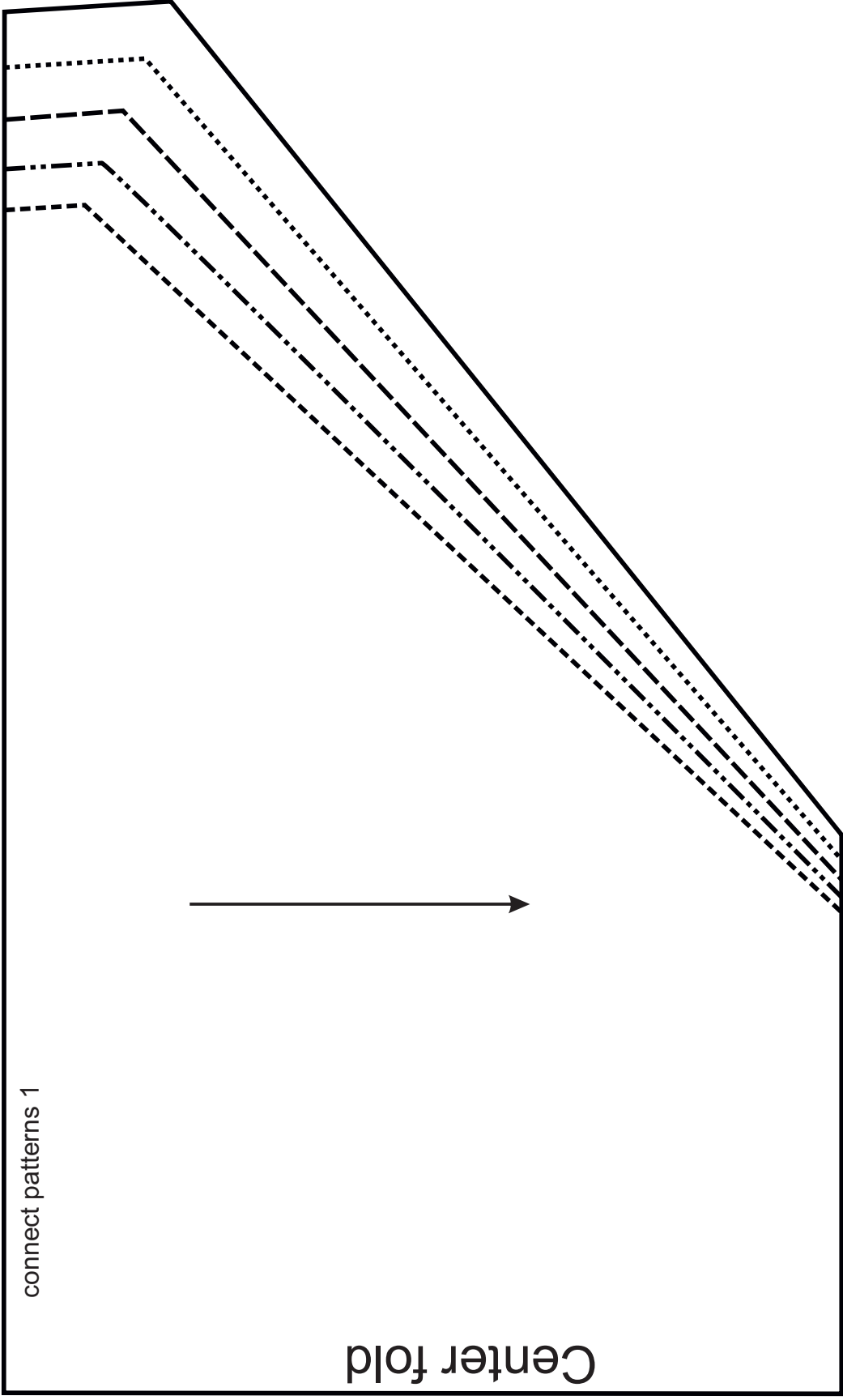
Center fold

connect patterns 4

*Love your mind. Find your soul.*  
SOULMATTIE

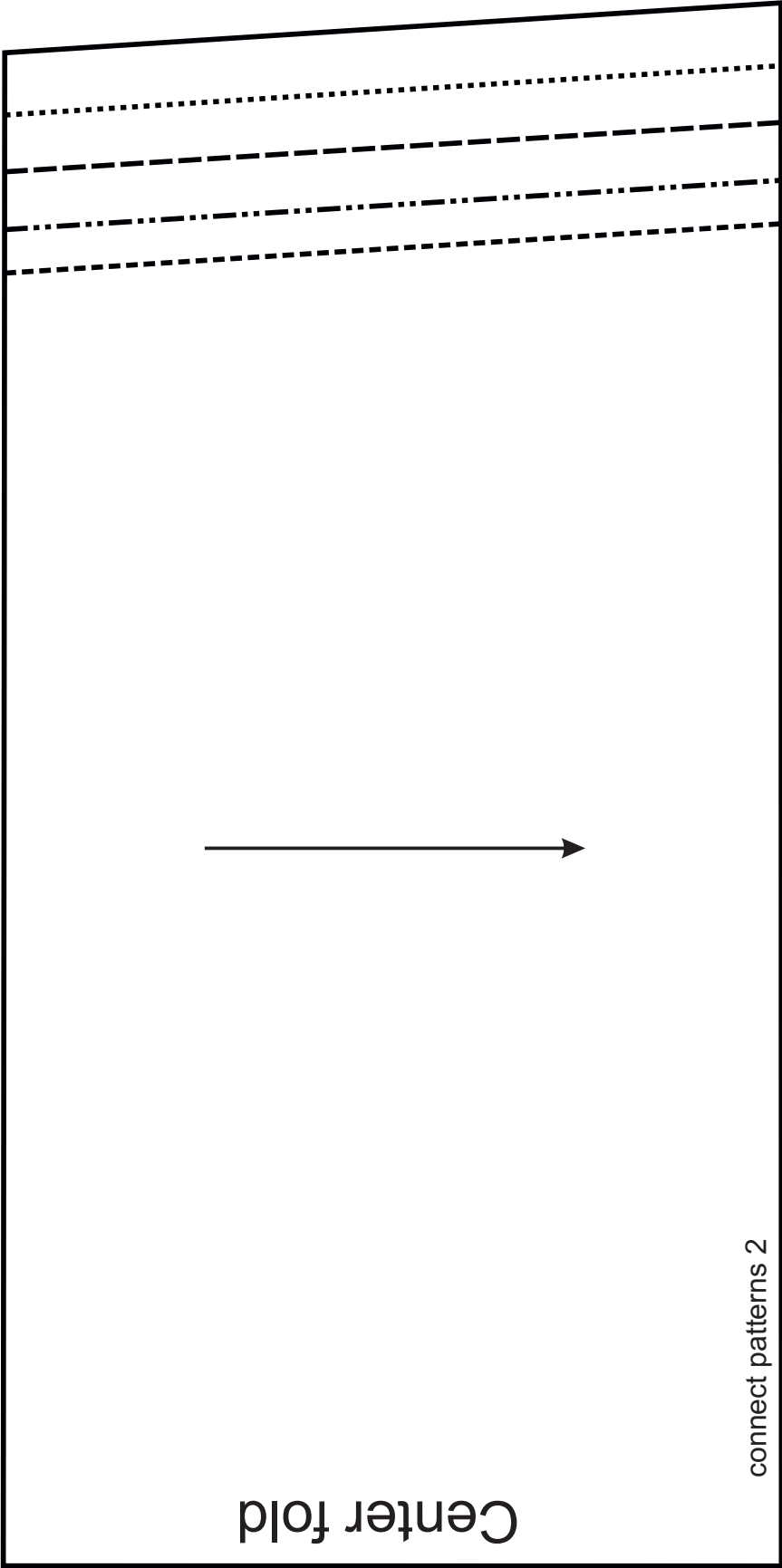
connect patterns 1





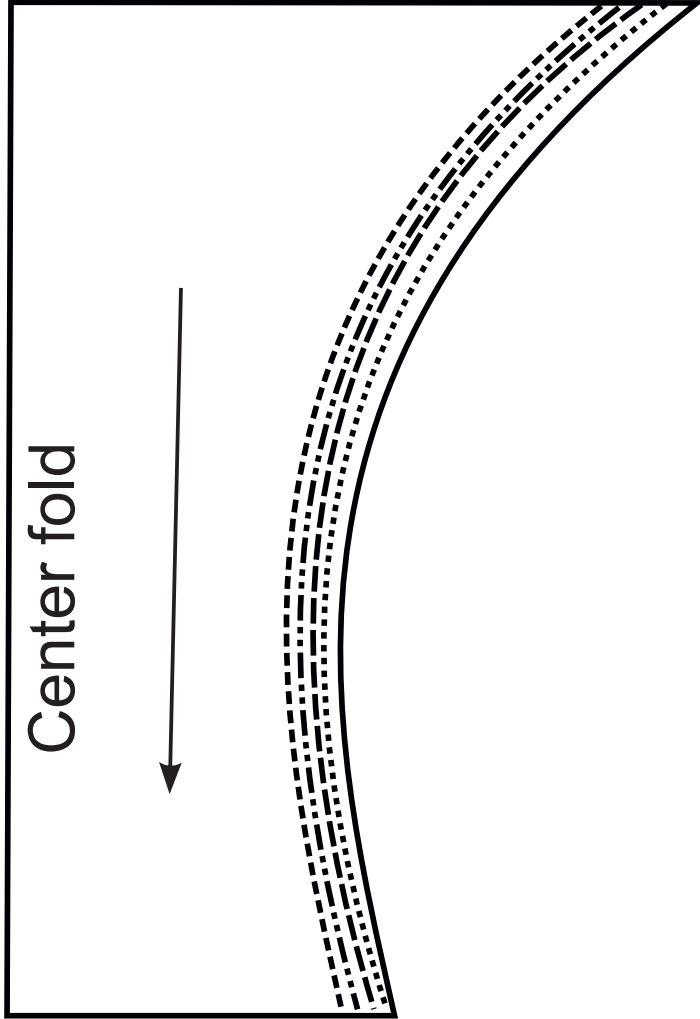
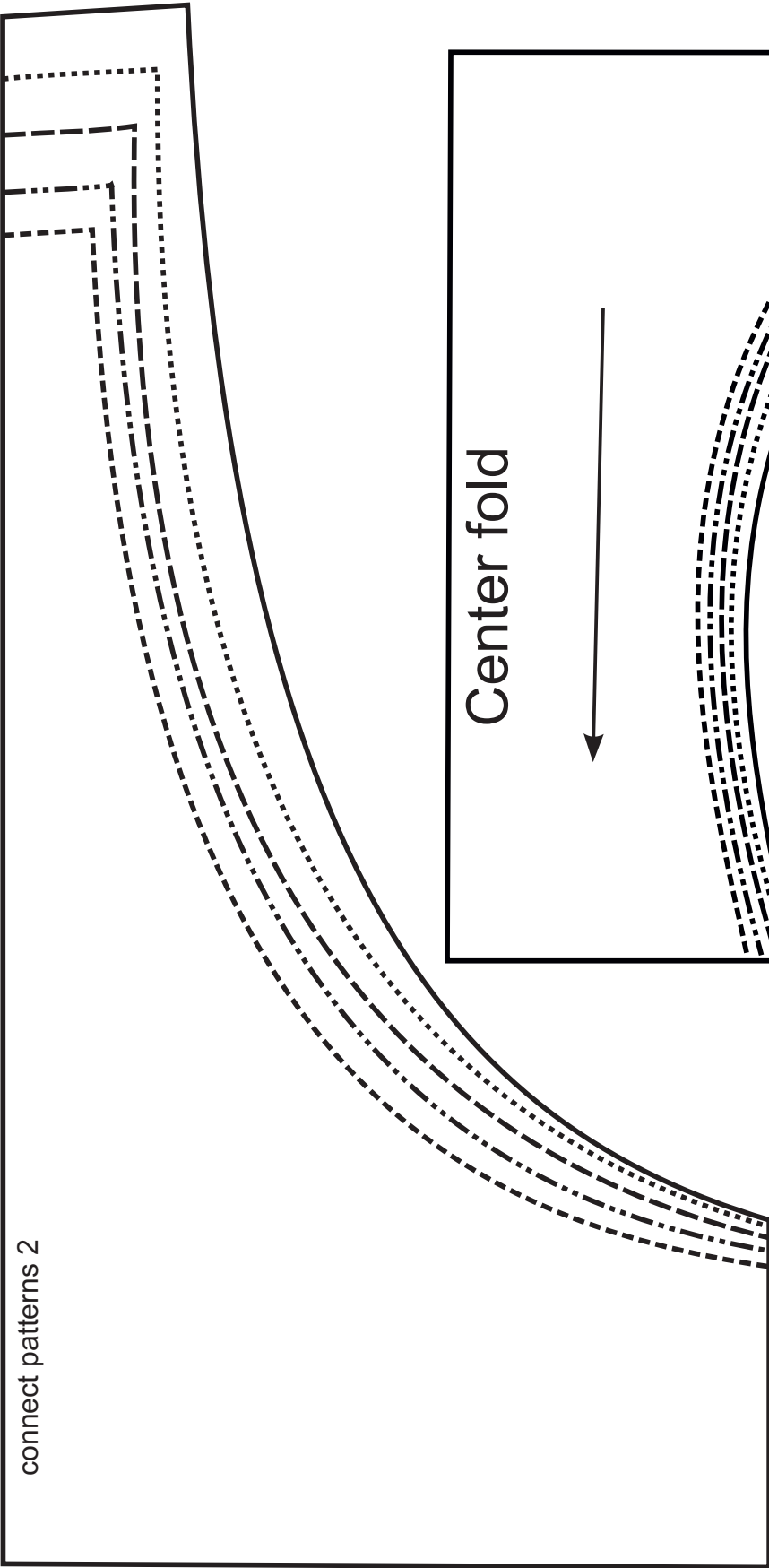
Center fold

connect patterns 1





connect patterns 2



# Straps

