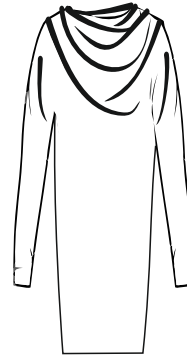


*Lose your mind. Find your soul.*

# SOULMATTER

Length of the dress 120cm

0030 long



42 .....  
40 ———  
38 - - - -  
36 - - - -

Add seam allowance +1cm

Please notice that You will need WIDER than regular fabric!

340cm X 180cm fabric

3.7yd X 71 inch

I suggest using fabric which both good and bad sides look similar. Pattern suits only for 2 ways stretchy thin lycra fabric.

The way You finish the edges of the garment is up to You.

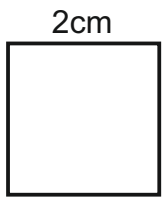
For more sewing tips please visit "Soulmatte" Youtube channel

INCH	XS	S	M	M/L	L
	34	36	38	40	42
BUST	31.4	33	34.6	36.2	37.7
WAIST	24.4	25.9	27.5	29.1	30.7
HIPS	33.8	35.4	37	38.5	40.1

CM	XS	S	M	M/L	L
	34	36	38	40	42
BUST	80	84	88	92	96
WAIST	62	66	70	74	78
HIPS	86	90	94	98	102

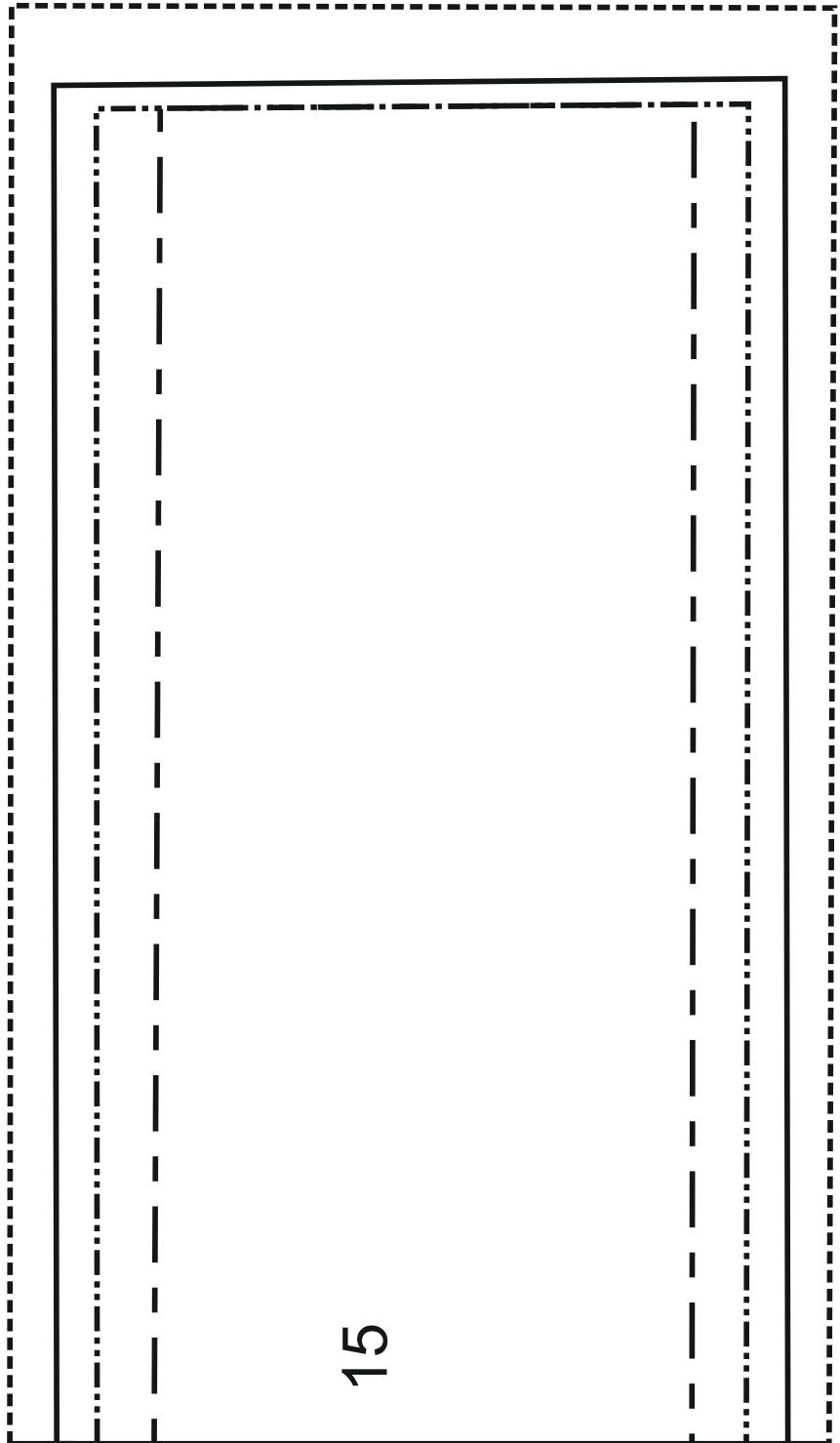
*Sewing pattern - Minimalist Dress*

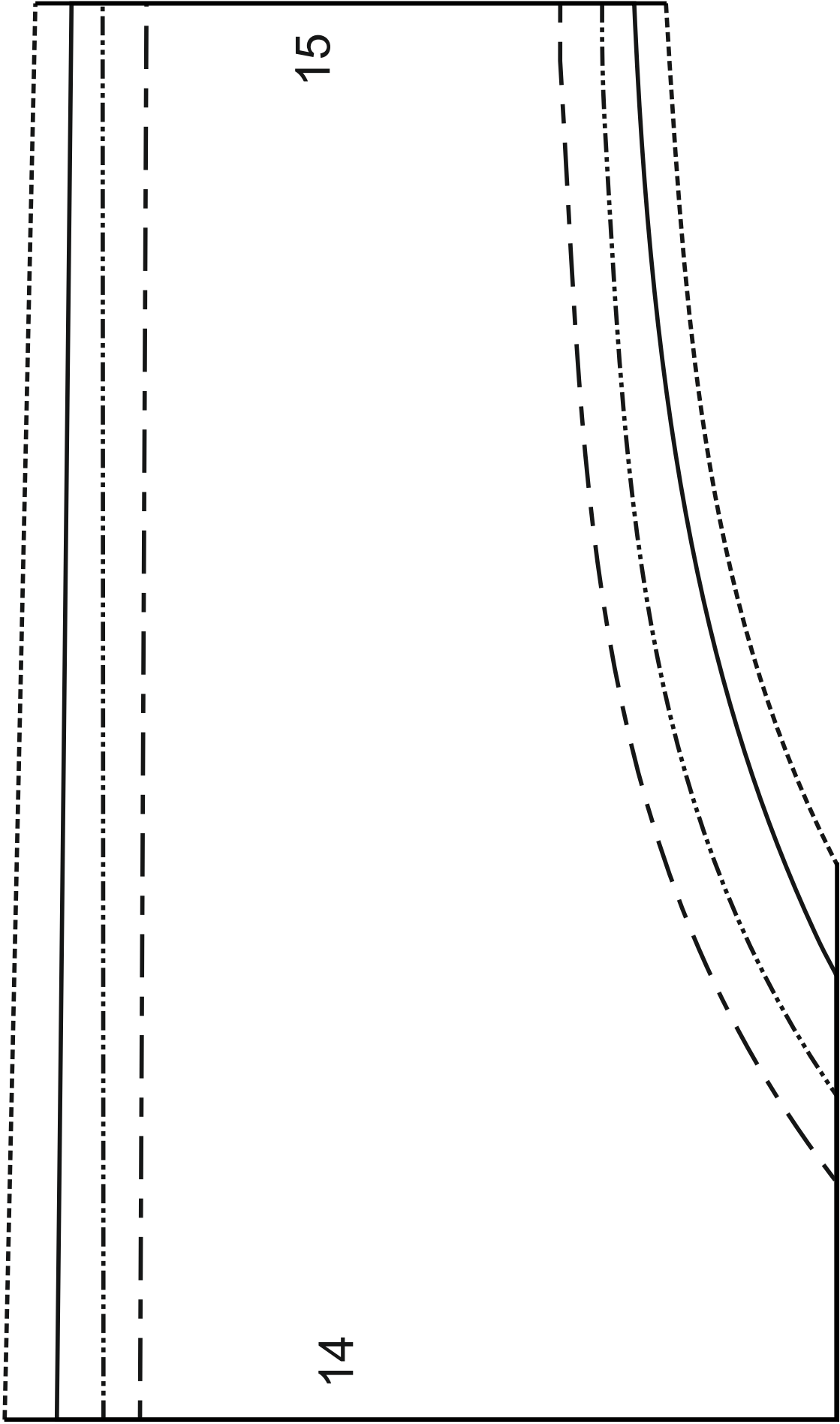
42 .....  
40 ———  
38 - - - -  
36 - · - · -

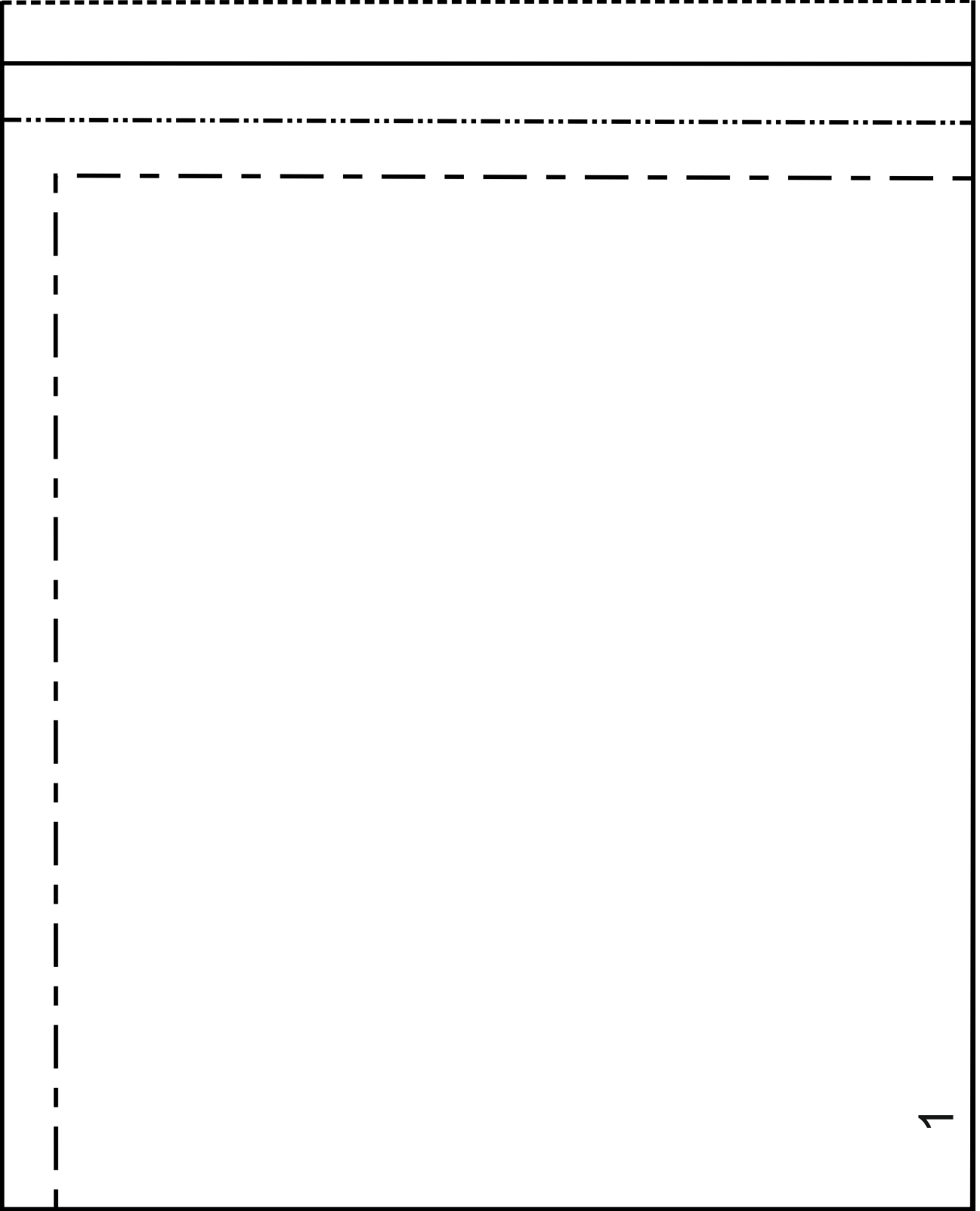


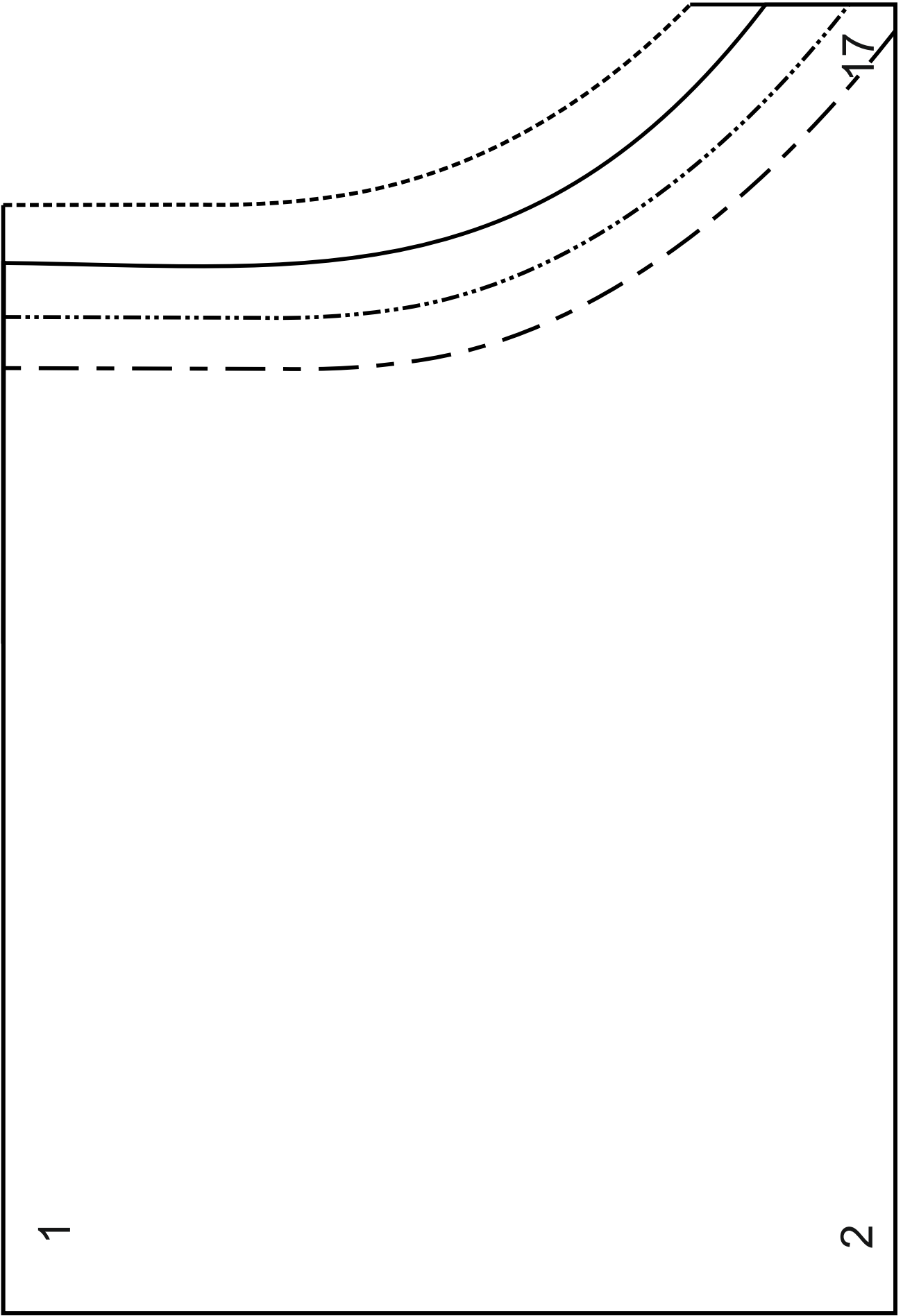
or 0.78in

↑  
Example for correct  
printer settings:  
measure the cube  
before cutting the pattern.









2

*Love your mind. Find your soul.*  
SOULMATTIE

3

8

6



4

Center fold

3

4

10

5



5

11

6

6

12

7

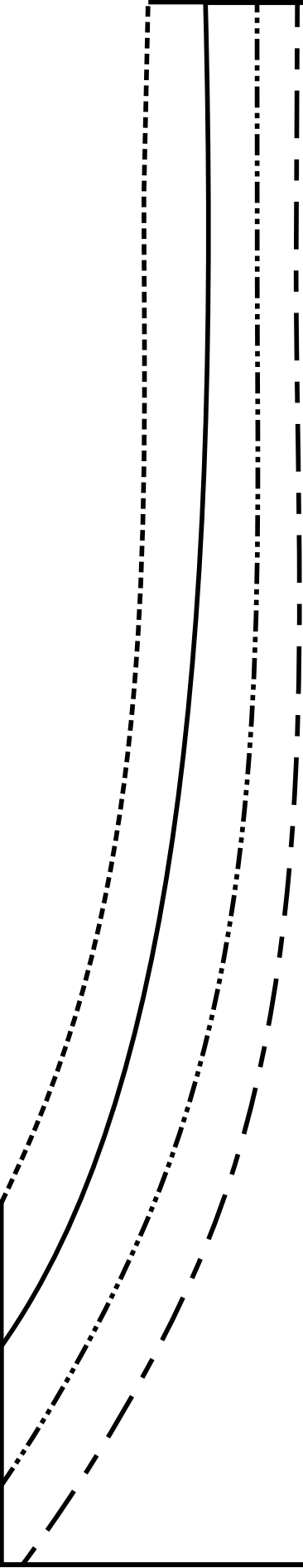
7

22

18

18

19

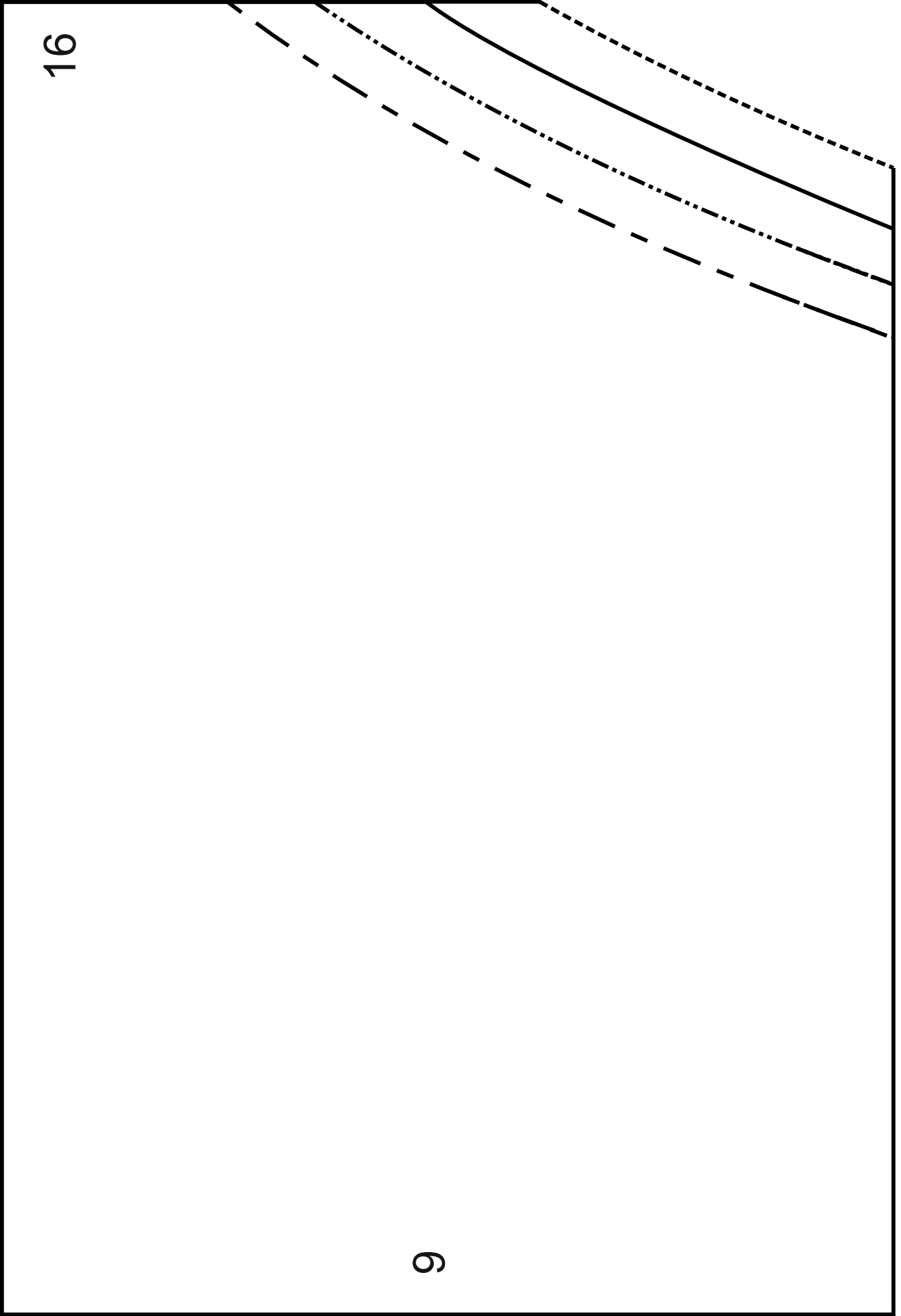


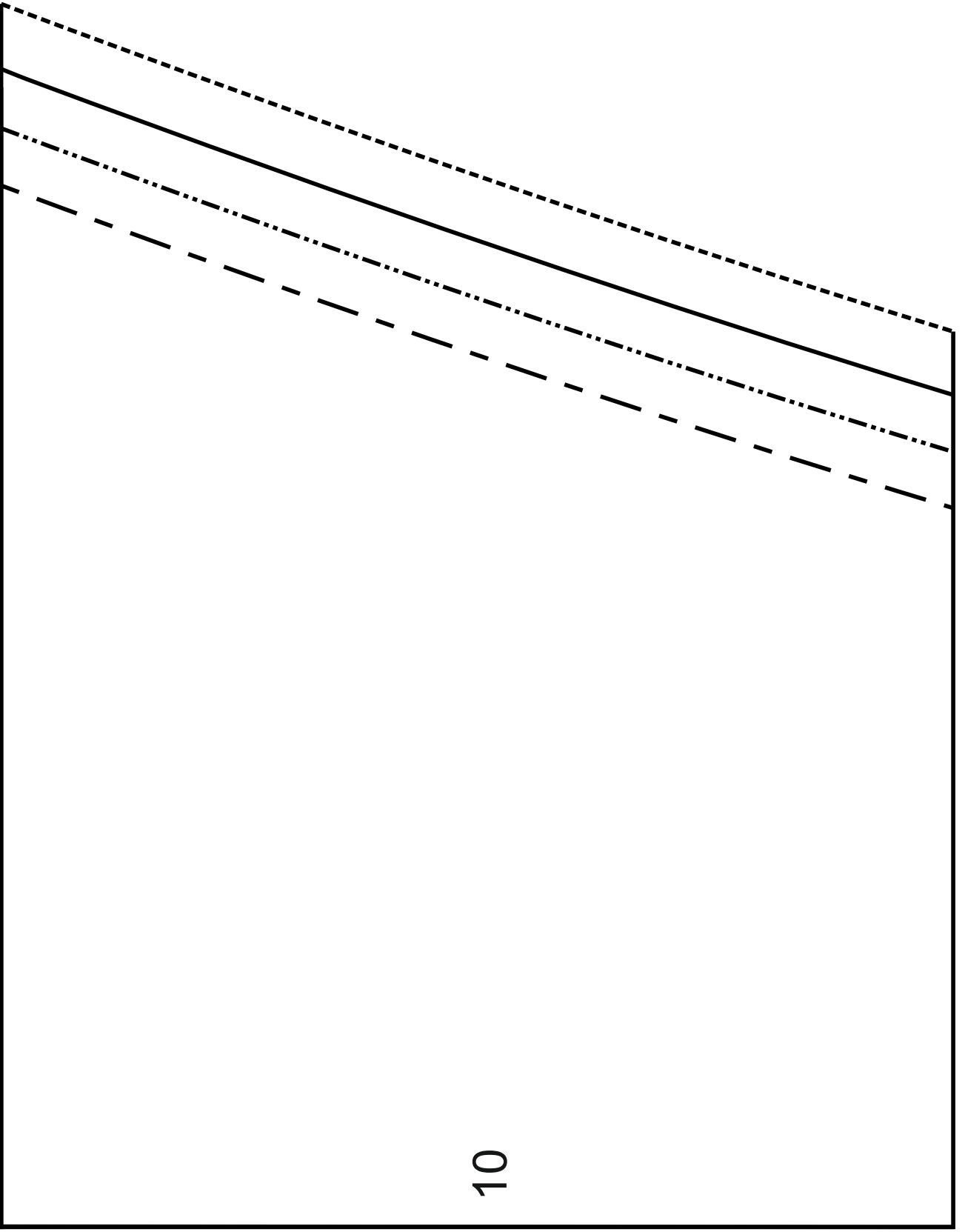
14

8

16

9





10

