

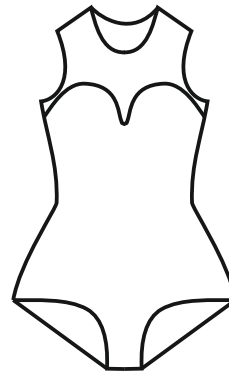
Lose your mind. Find your soul.

SOULMATTER

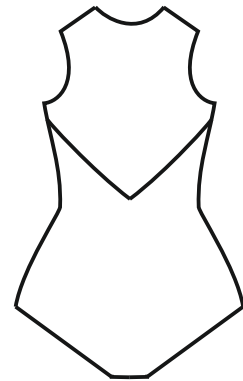
42	—————
40
38	———
36
34

Bodysuit "Lily"

0051



front



back

Add seam allowance + 1cm.

Suitable only for 4-ways stretchy fabrics.

You will need **85cm(34inch)**.

Cut and glue this pattern together with sticky tape.

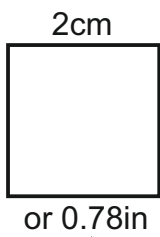
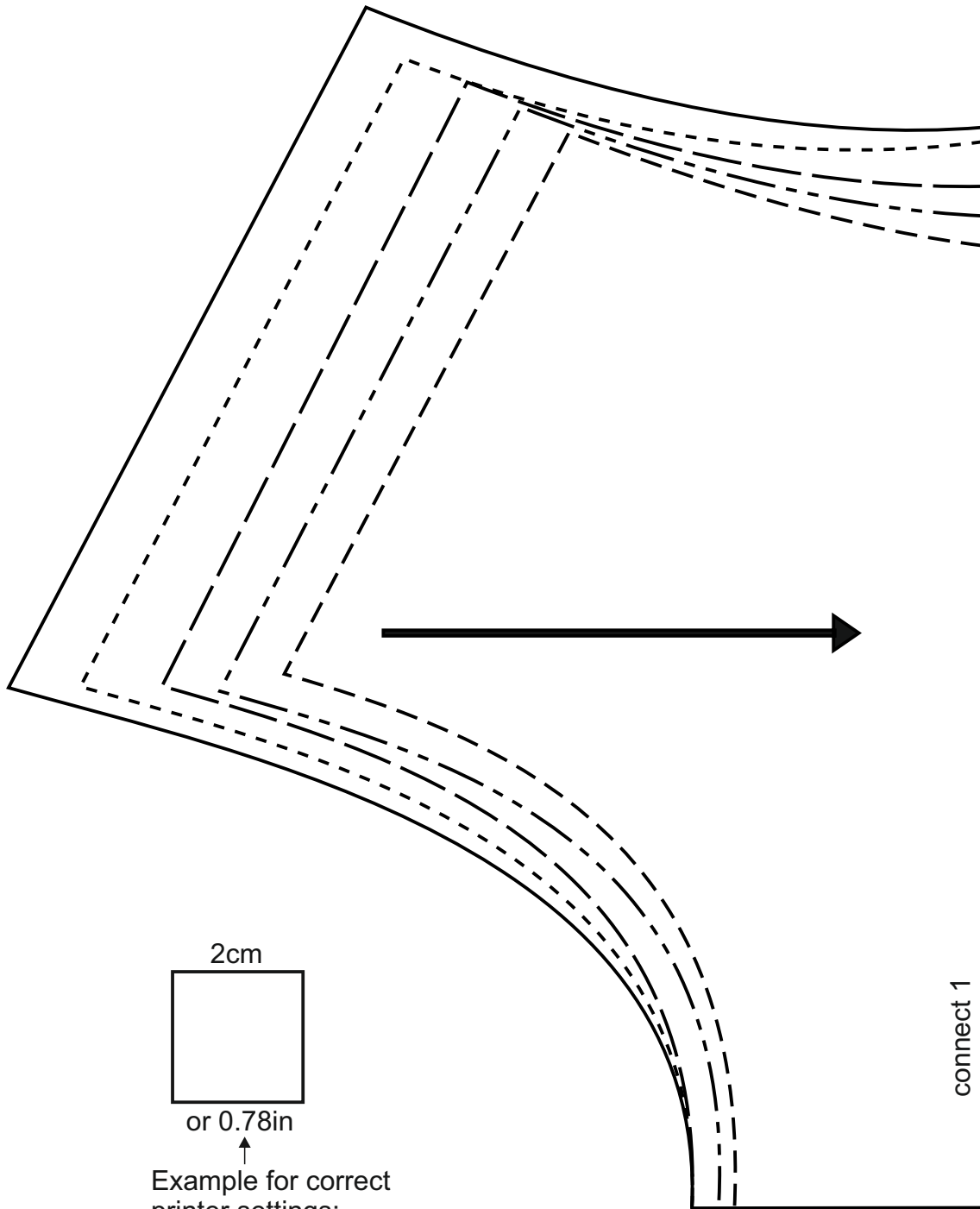
Made for regular A4 home printer. Choose "scale to fit" printer settings.

For more sewing tips please visit "Soulmatte" Youtube channel.

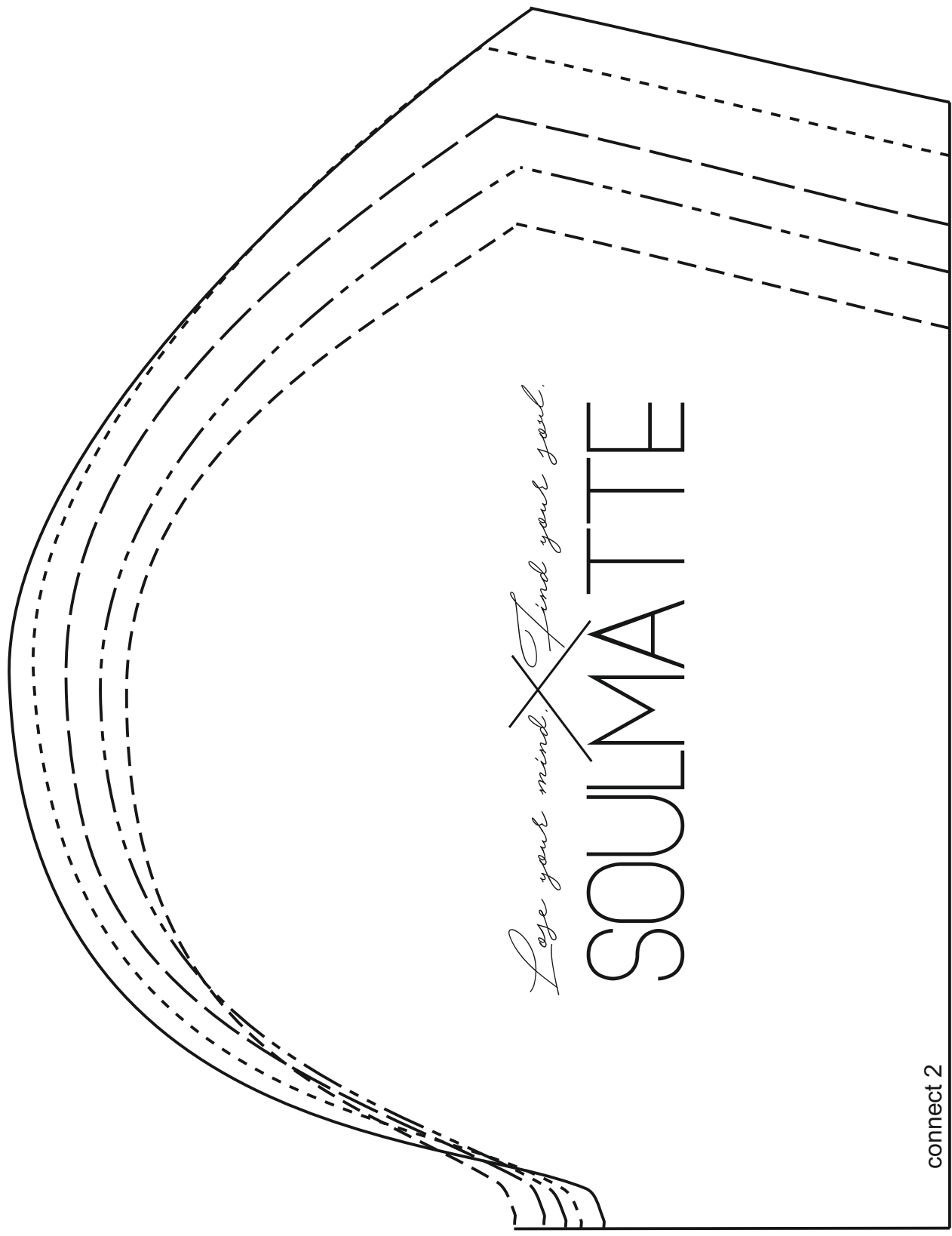
INCH	XS	S	M	M/L	L
	34	36	38	40	42
BUST	31.4	33	34.6	36.2	37.7
WAIST	24.4	25.9	27.5	29.1	30.7
HIPS	33.8	35.4	37	38.5	40.1

CM	XS	S	M	M/L	L
	34	36	38	40	42
BUST	80	84	88	92	96
WAIST	62	66	70	74	78
HIPS	86	90	94	98	102

Sewing pattern - Leotard Lily

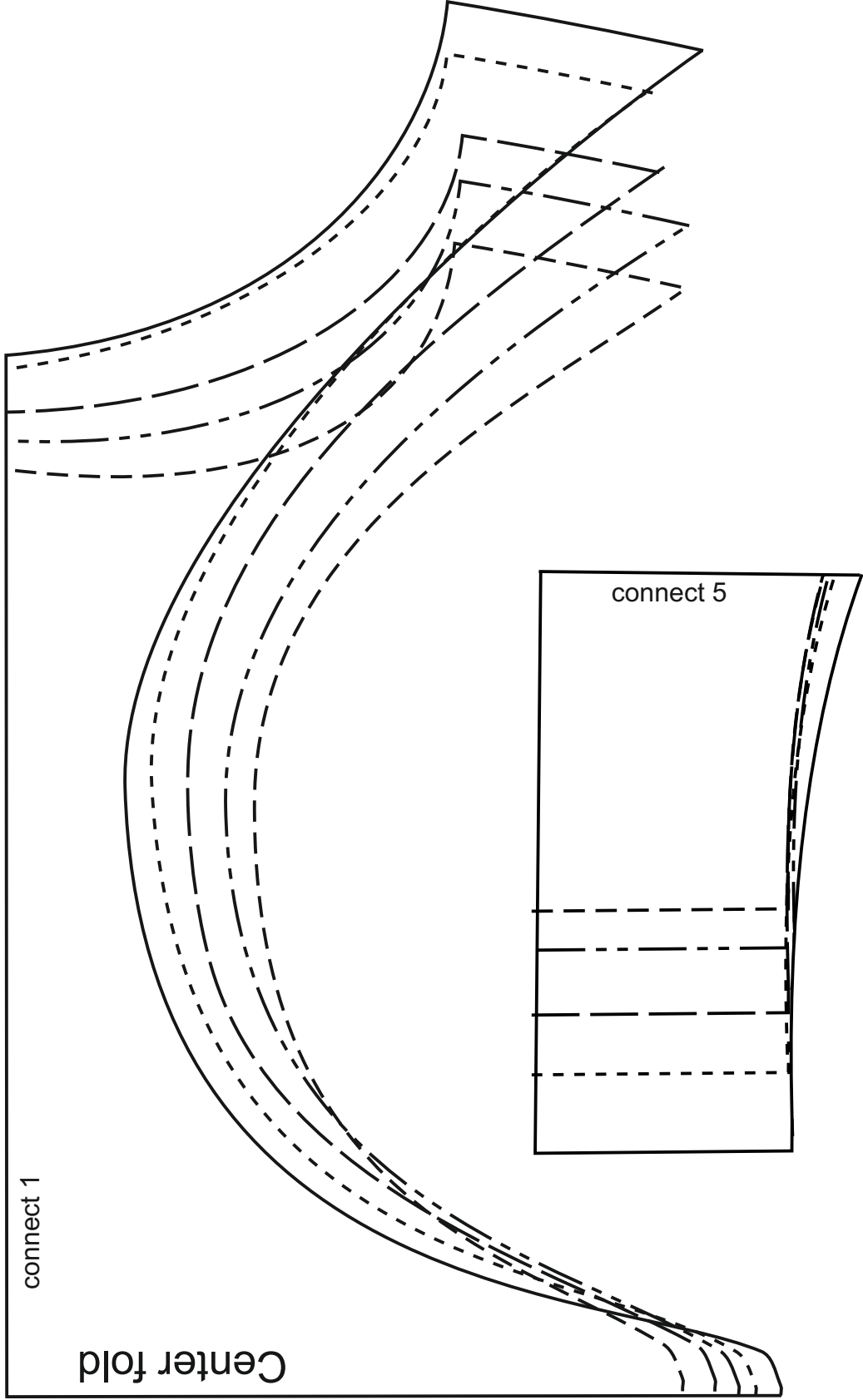


Example for correct
printer settings:
measure the cube
before cutting the pattern.



Love your mind. Find your soul.

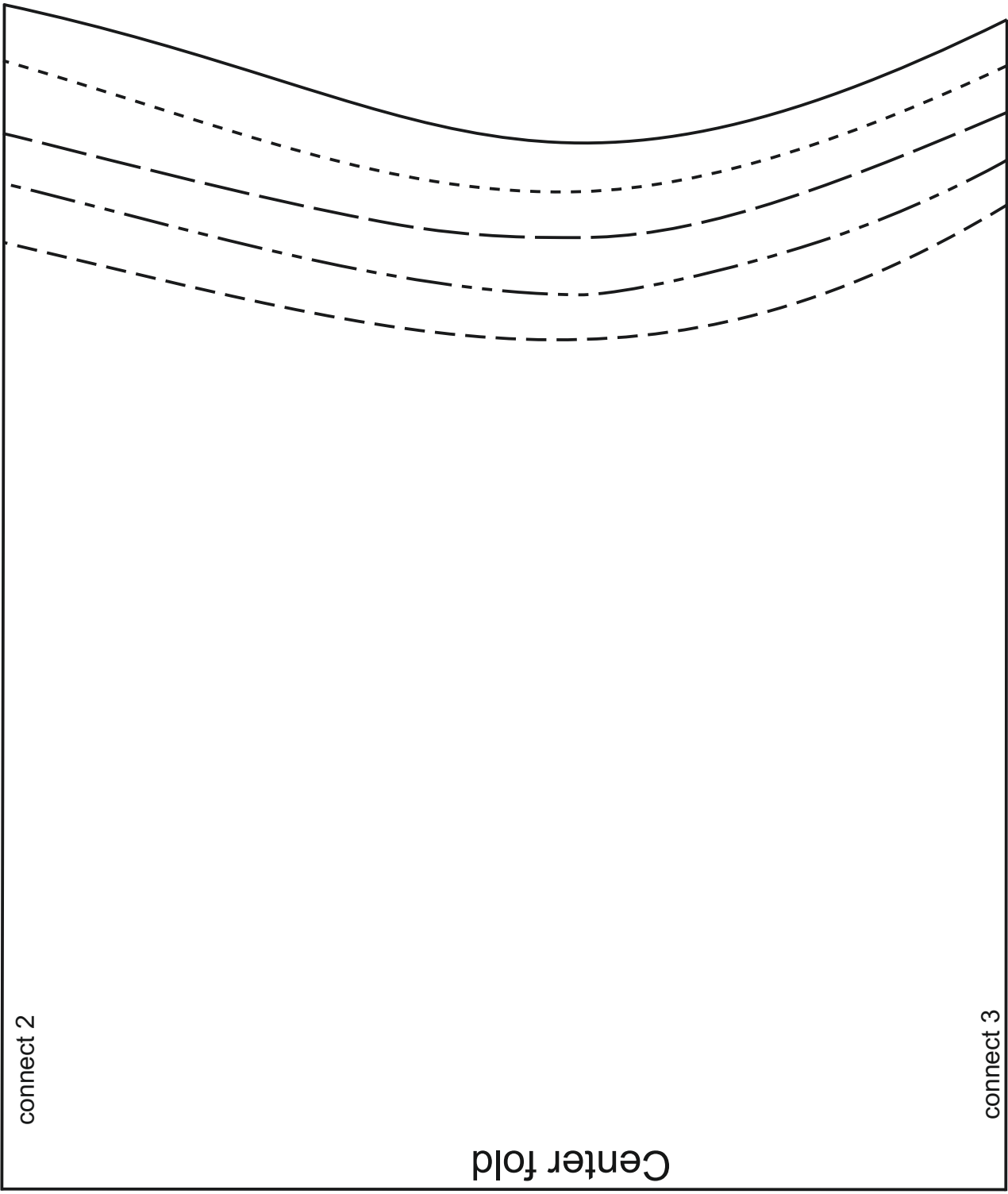
SOULMATTER



connect 1

Center fold

connect 5



Center fold

connect 2

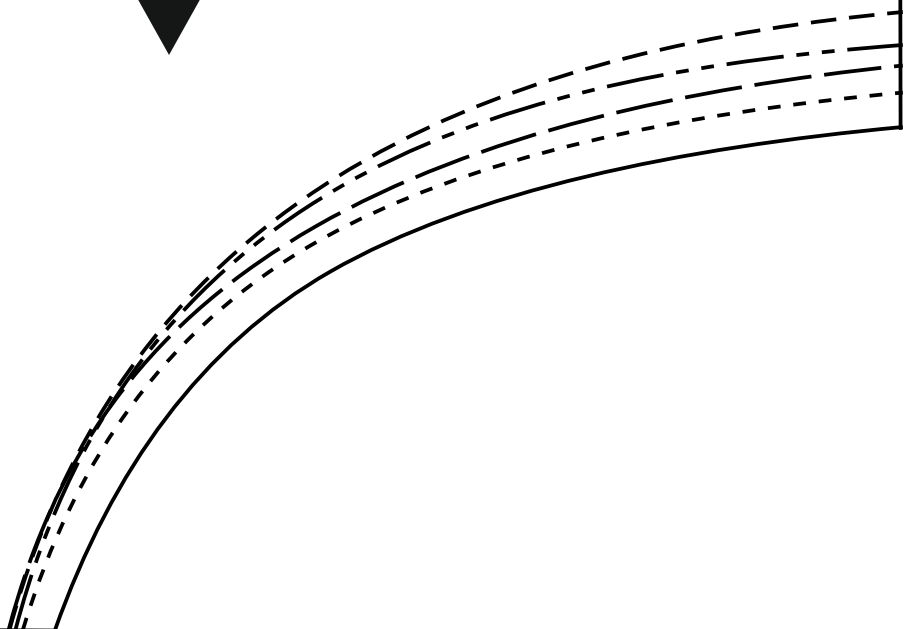
connect 3

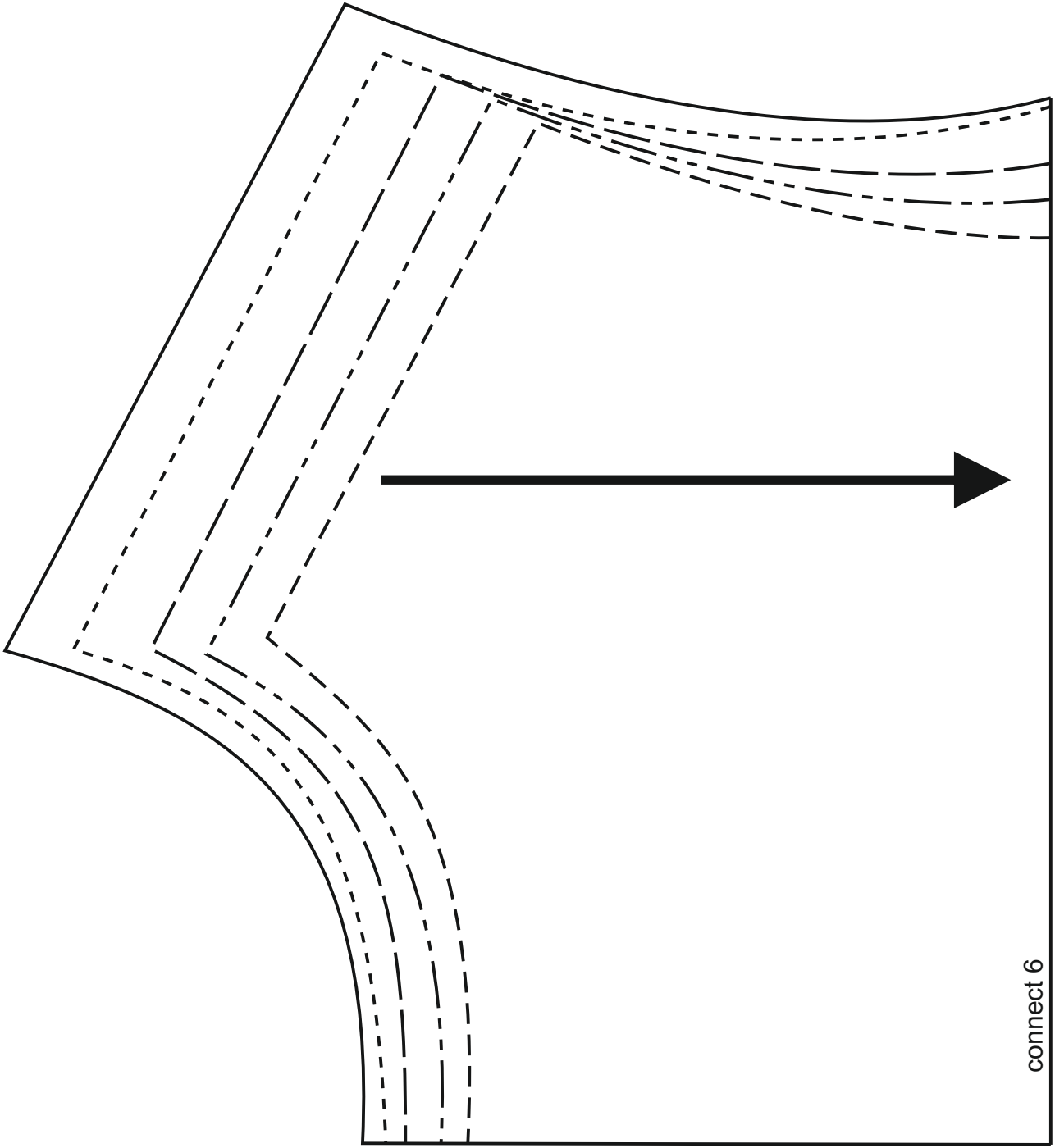
connect 3



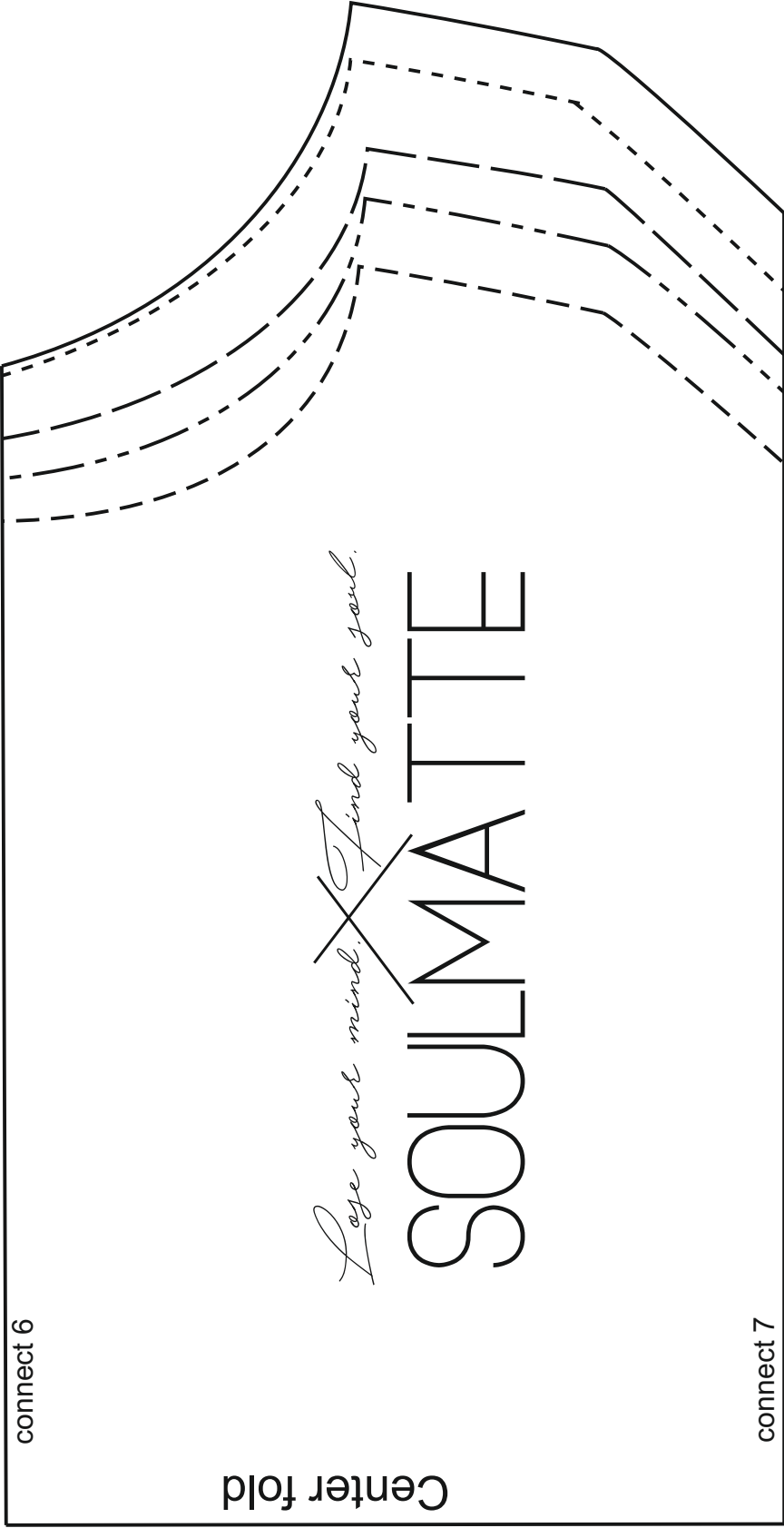
connect 4

connect 5





connect 6



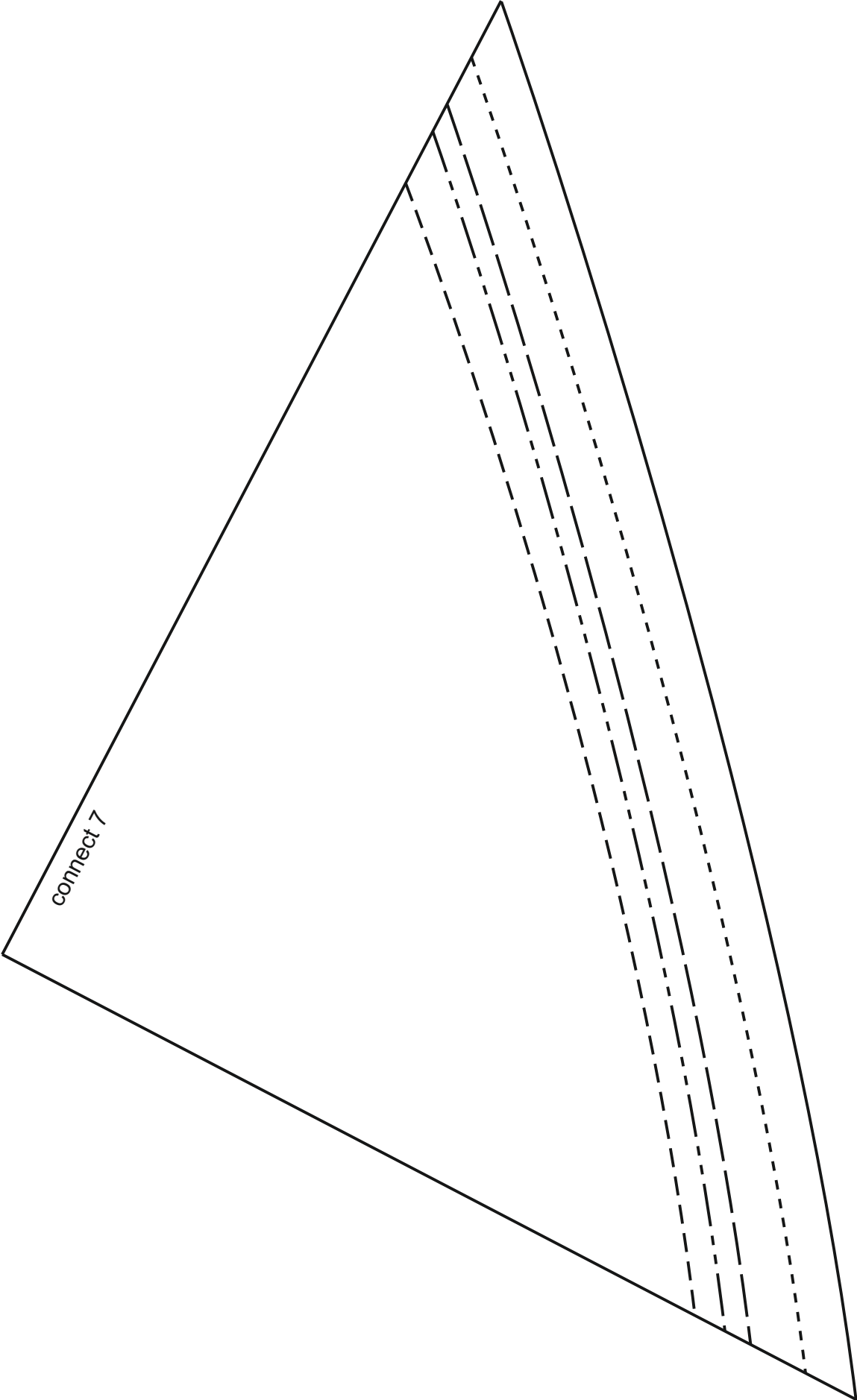
connect 6

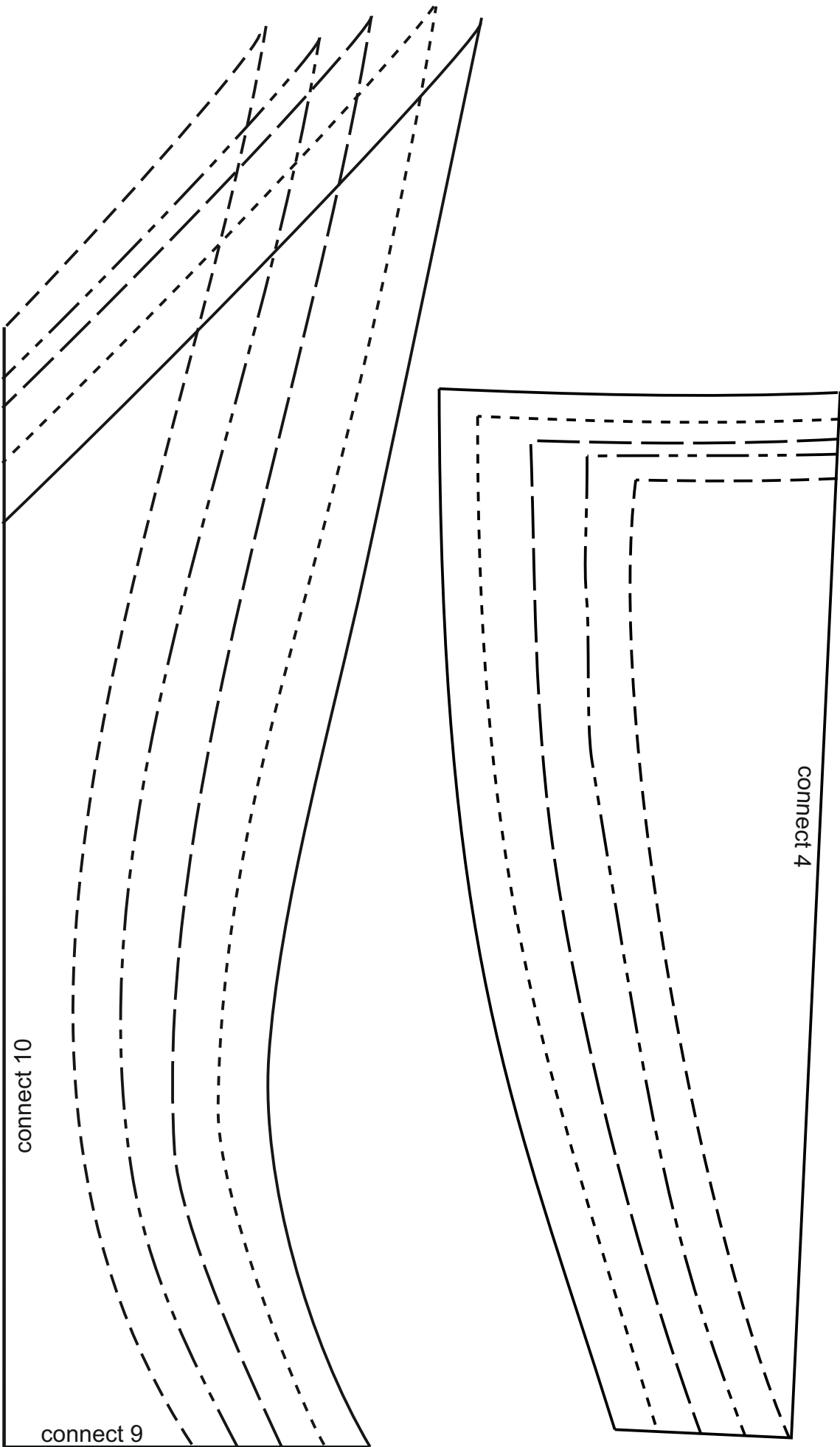
Center fold

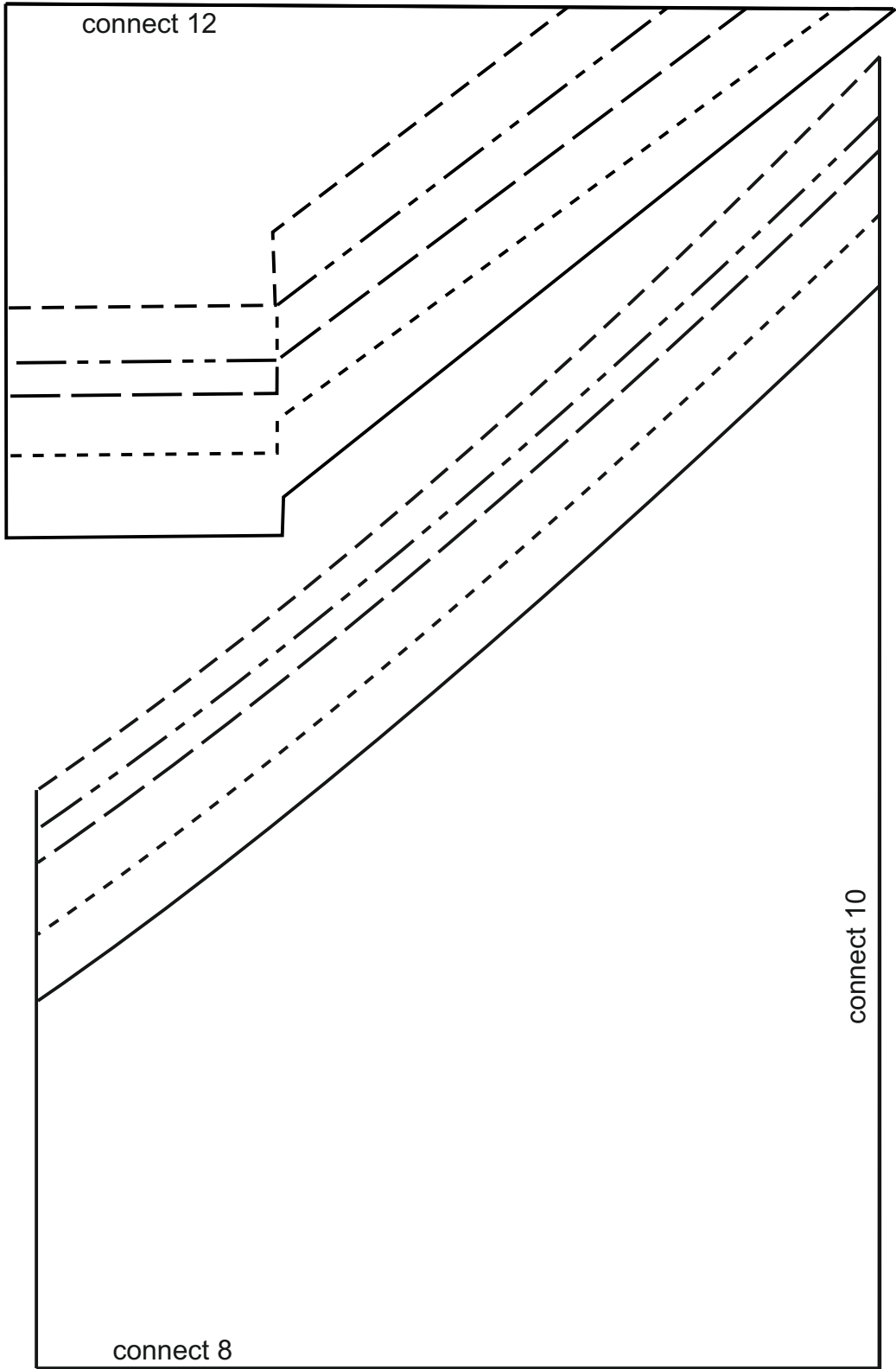
Lose your mind. Find your soul.

SOULMATTIE

connect 7







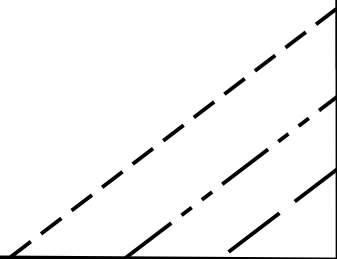
connect 8

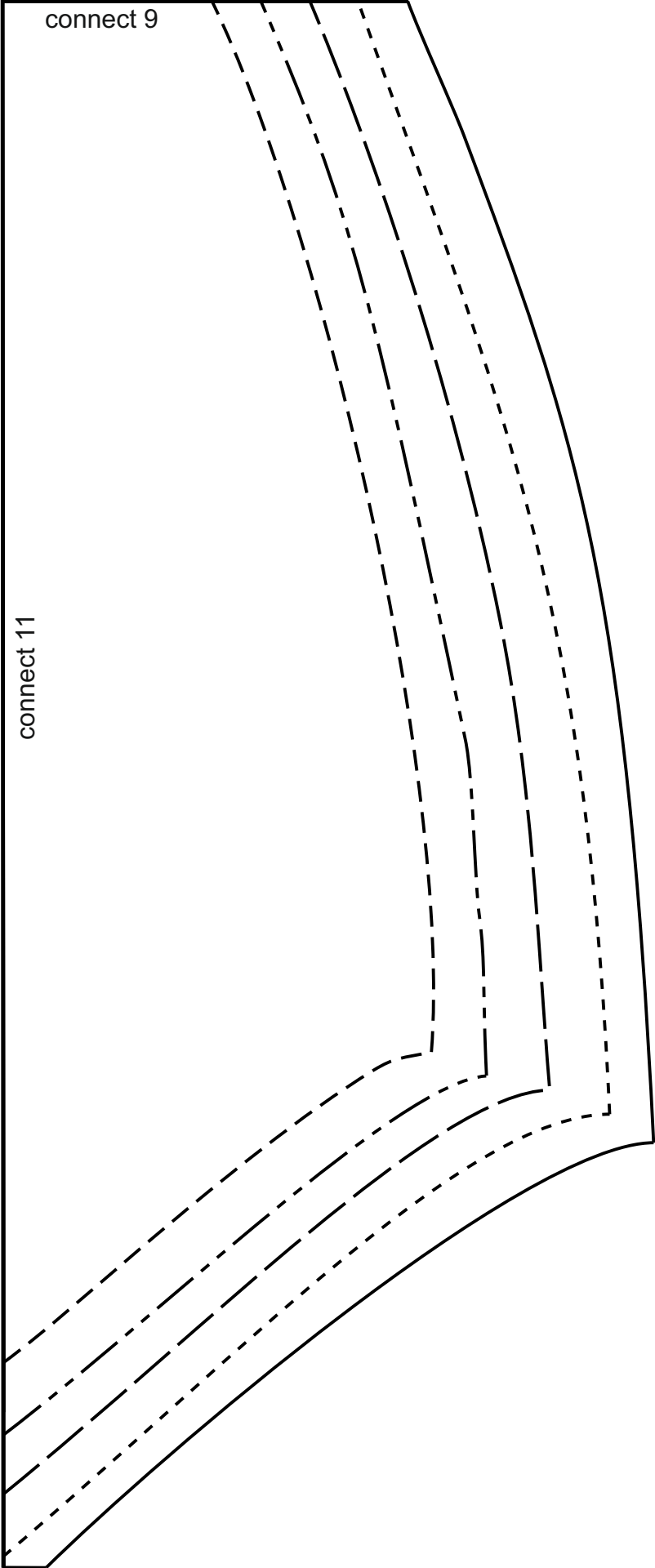
Center fold



connect 11

connect 12





connect 9

connect 11